



# Installation Manual

Version: 2.1

Last Updated: 11/01/2021

## Document Control Information

Document Title	Quanika
Document Type	Installation Manual
Document Version	Version 2.1
Software Version	Version 4.0.16

## Document Revision History

Revision	Date	Author	Details
Version 1.0	26 Nov 2020	AB	Revision
Version 2.0	16 Dec 2020	AB	Added IIS installation Information
Version 2.1	11 Jan 2021	AB	Added Self Enrollment Installation Guide

## Table of Contents

Document Control Information.....	i
Document Revision History .....	i
Chapter 1 .....	1
Introduction .....	1
Quanika Access Control System .....	1
Chapter 2 .....	2
Download Installer .....	2
Installing Quanika Components .....	2
Initializing Installation .....	3
Components Installation .....	6
Quanika Application .....	6
Data Exchange Gateway Service .....	6
Quanika Web .....	6
VLC Media Player & Axis Media Control .....	13
Microsoft Report Viewer & CLR Types for SQL Server 2014.....	13
Microsoft SQL Server 2016 .....	13
Network Installation .....	15
Configuring Quanika Database.....	17
Scenario 1: SQL Server already installed.....	17
Scenario 2: SQL Server not previously installed .....	20
Completing Installation .....	24
Finish Installation .....	35
License Registration .....	36
Self-Enrollment.....	40
Installation .....	40
Preset up - Settings.....	41
Quanika Settings.....	42
Active Directory Settings .....	42
Contact Information .....	43

# Chapter 1

## Introduction

Quanika as a company, has been managed by a team of industry specialists who have more than 125 years of combined experience in delivering outstanding security solutions to various countries around the globe.

## Quanika Access Control System

Quanika and its entry level access control software named Compact has specially been developed for the Axis range of hardware. Quanika and Axis collectively give you complete flexibility, control and visibility of the whole access system. It offers advanced features that make use of big data intelligence techniques which provides a user-friendly platform providing enhanced security, minimized risks and a top notch user experience.

## Chapter 2

### Download Installer

Download the software from link provided.

### Installing Quanika Components

Access the location in your computer where you downloaded the Quanika installer.

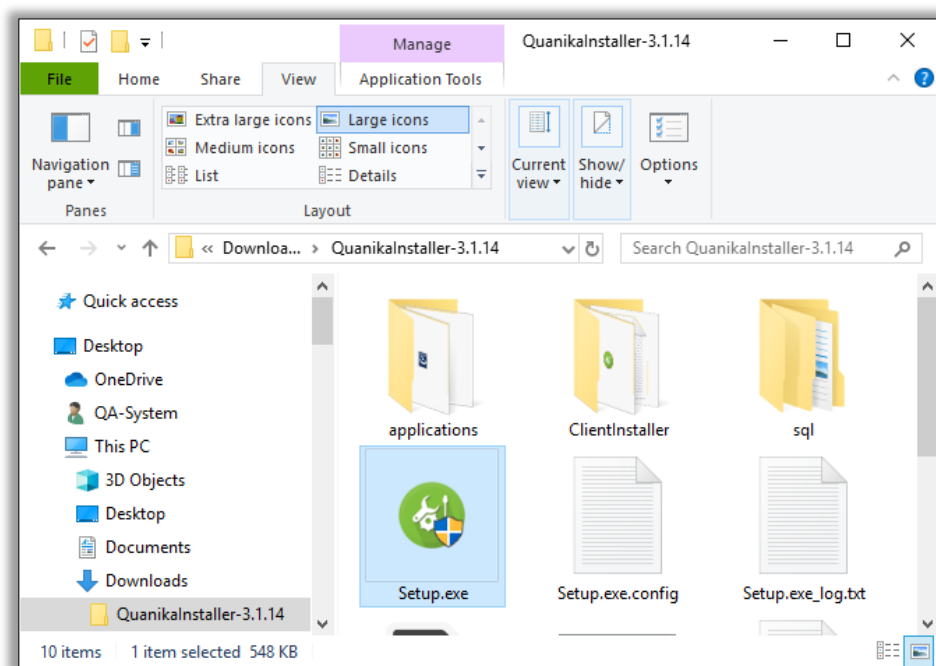



FIGURE 1

Locate and run the Quanika **Setup.exe** (  ) file.

## Initializing Installation

The “Welcome to QUANIKA installation setup” window appears.

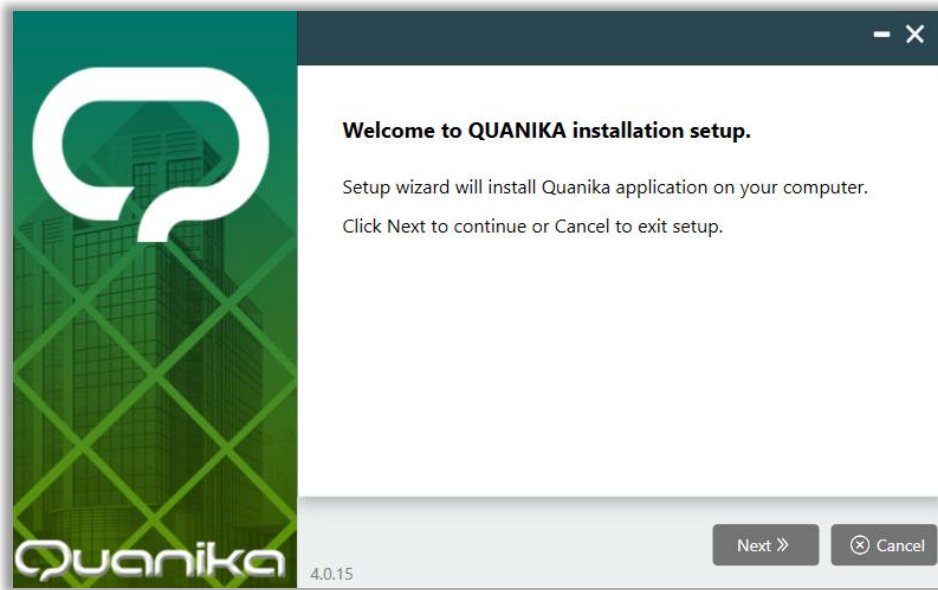
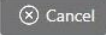


FIGURE 2

Click on the Next button (  ) to proceed with the installation.

Optionally, click on the Cancel button (  ) to exit the installation.

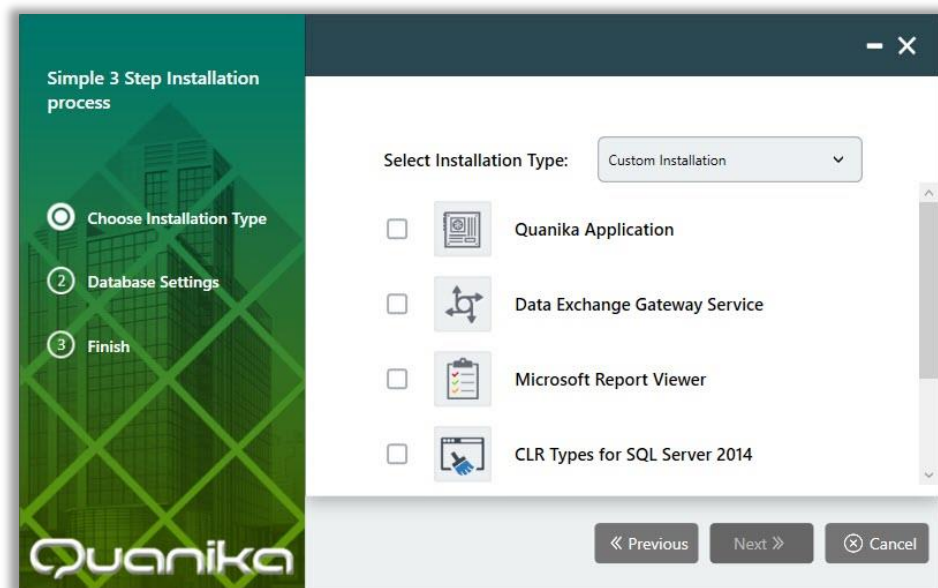
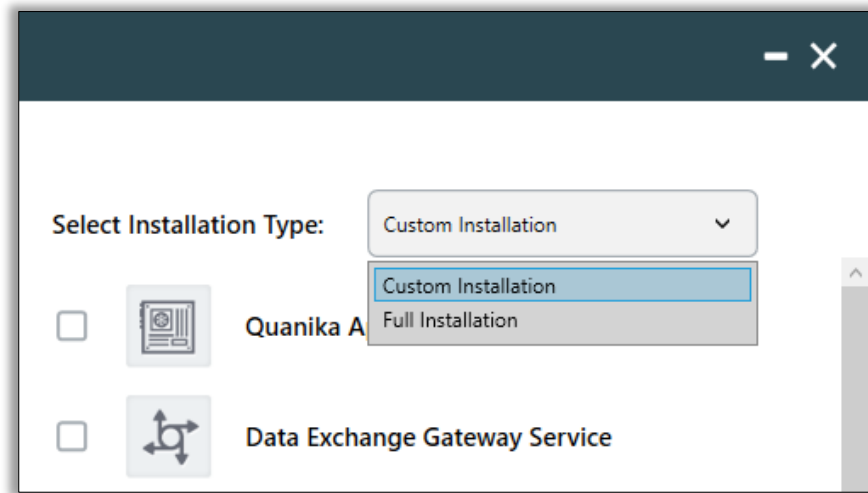


FIGURE 3

The **Quanika simple 3 step installation** window appears next.

The setup provides two installation types. **Full Installation** and **Custom Installation**.



**FIGURE 4**

The Quanika setup requires some additional components to be installed which include Microsoft SQL Server. All such required components are included with the Quanika installer.

Select **Full Installation** type in case of the following scenarios:

- It is the first time that you are installing the Quanika application on your computer
- If you do not have any or all of the additional components installed previously on your computer.

Select **Custom Installation** type if any of the following scenarios exist:

- Quanika application is already installed on the computer and its components need to be added or removed.
- Additional components required by the Quanika setup are installed on your computer, like Microsoft SQL Server.
- If you decide not to install any one of the additional components of the Quanika application.

The Quanika setup includes Microsoft SQL Server 2016. This version is recommended for use with the Quanika application.

Other versions of Microsoft SQL Server are also supported which include Microsoft SQL Server 2008, 2012, 2014 and 2018.

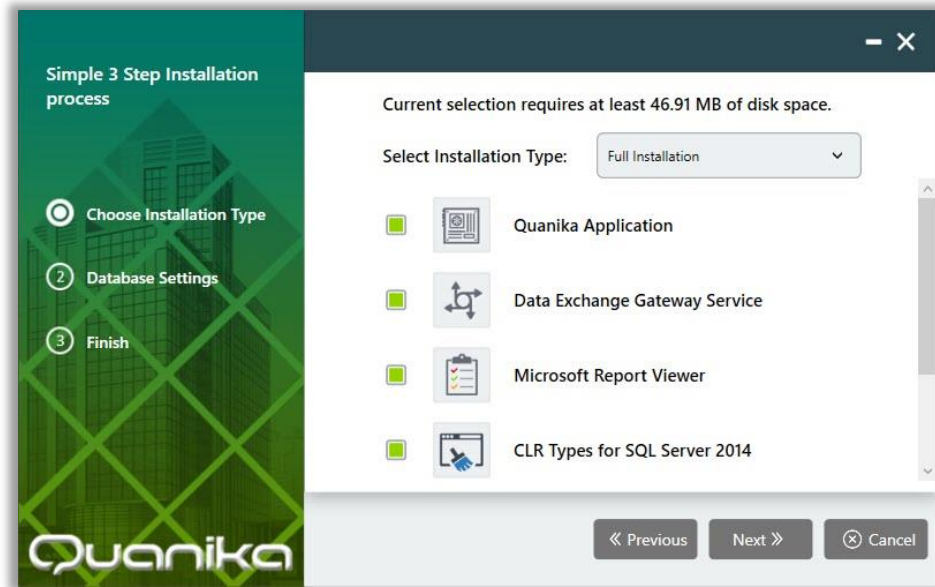


FIGURE 5

Selecting Full Installation from the drop-down list will automatically select all the listed components required for Quanika.

The green check boxes indicate the selected components.

Once a component is installed the check box turns red.

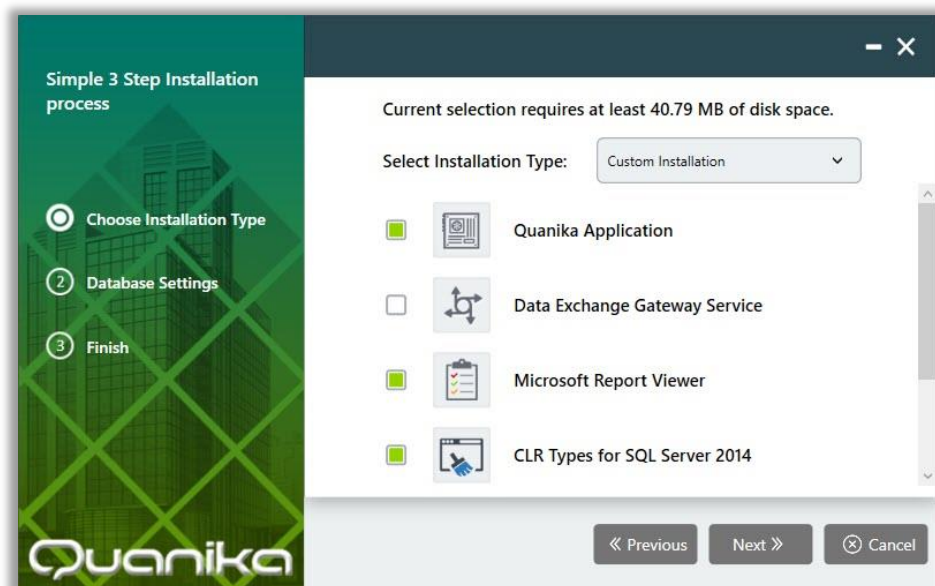


FIGURE 6



Selecting Custom Installation from the drop-down list enables selection of components as desired.

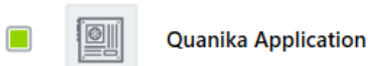
## Components Installation

Quanika Installer has following modules for installation.

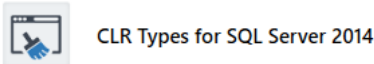
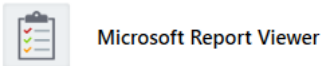
1. Quanika Application
2. Data Exchange Gateway Service
3. Quanika Web
4. VLC Media Player
5. Axis Media Control
6. Microsoft Report Viewer
7. CLR Types for SQL Server 2014
8. Microsoft SQL Server 2016
9. Network Share

### Quanika Application

Quanika Application module can be installed when this option will be selected. Quanika Application is used mainly for configuration of controllers and other modules.

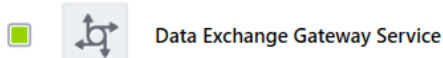


Quanika application requires installation of two other modules to function properly.



### Data Exchange Gateway Service

By selecting this option, it will install Data Exchange Server and Data Exchange Windows Service.

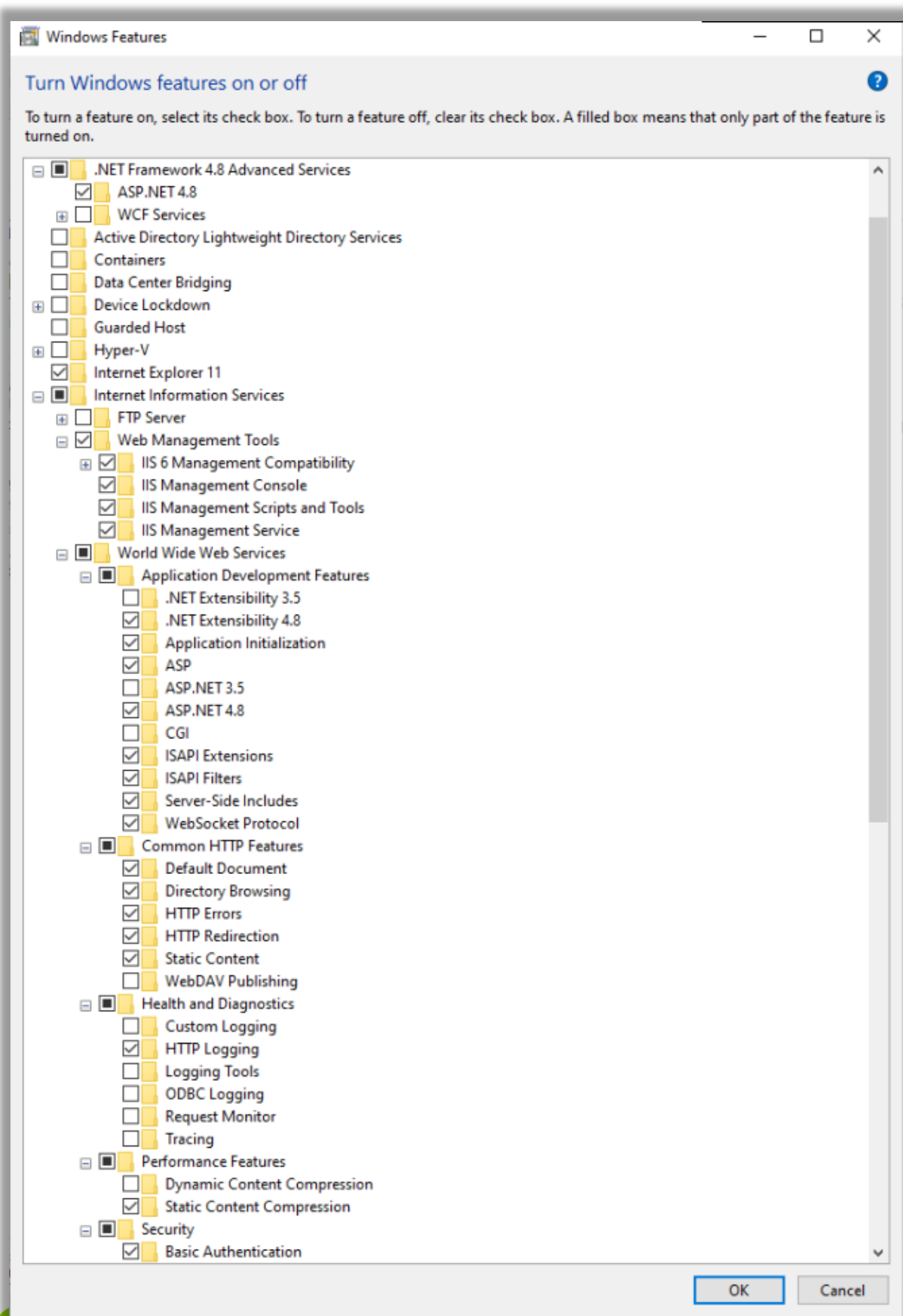


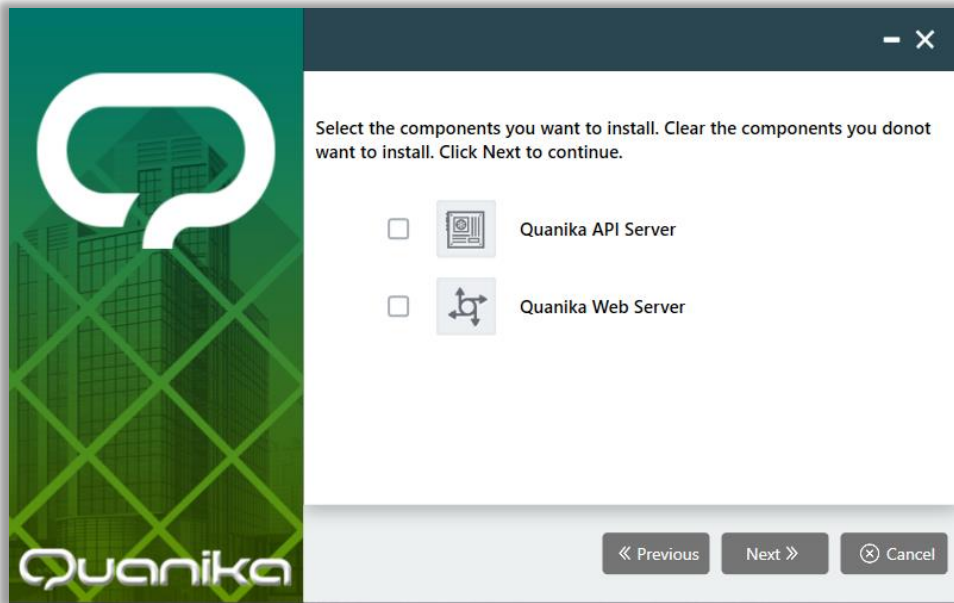
### Quanika Web

Quanika Web Application requires IIS pre-installed on the machine. Following are the IIS features that should be enabled .

- IIS-WebServerRole (*Internet Information Services*)
- IIS-WebServer (*World Wide Web Services*)
- IIS-CommonHttpFeatures (*Common HTTP Features*)
- IIS-HttpErrors (*HTTP Errors*)
- IIS-HttpRedirect (*HTTP Redirection*)
- IIS-ApplicationDevelopment (*Application Development Features*)

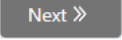
- IIS-NetFxExtensibility45 (*.NET Extensibility 4.8*)
- IIS-HealthAndDiagnostics (*Health and Diagnostics*)
- IIS-HttpLogging (*HTTP Logging*)
- IIS-Security (*Security*)
- IIS-RequestFiltering (*Request Filtering*)
- IIS-Performance (*Performance Features*)
- IIS-WebServerManagementTools (*Web Management Tools*)
- IIS-ManagementScriptingTools (*IIS Management Scripts and Tools*)
- IIS-IIS6ManagementCompatibility (*IIS 6 Management Compatibility*)
- IIS-Metabase (*IIS Metabase and IIS 6 configuration compatibility*)
- IIS-HostableWebCore (*Internet Information Services Hostable Web Core*)
- IIS-StaticContent (*Static Content*)
- IIS-DefaultDocument (*Default Document*)
- IIS-DirectoryBrowsing (*Directory Browsing*)
- IIS-WebSockets (*WebSocket Protocol*)
- IIS-ApplicationInit (*Application Initialization*)
- IIS-ASPNET45 (*ASP.NET 4.8*)
- IIS-ASP (*ASP*)
- IIS-ISAPIExtensions (*ISAPI Extensions*)
- IIS-ISAPIFilter (*ISAPI Filters*)
- IIS-ServerSideIncludes (*Server-Side Includes*)
- IIS-BasicAuthentication (*Basic Authentication*)
- IIS-HttpCompressionStatic (*Static Content Compression*)
- IIS-ManagementConsole (*IIS Management Console*)
- IIS-ManagementService (*IIS Management Service*)
- IIS-WMICompatibility (*IIS 6 WMI Compatibility*)
- IIS-LegacyScripts (*IIS 6 Scripting Tools*)
- IIS-LegacySnapIn (*IIS 6 Management Console*)

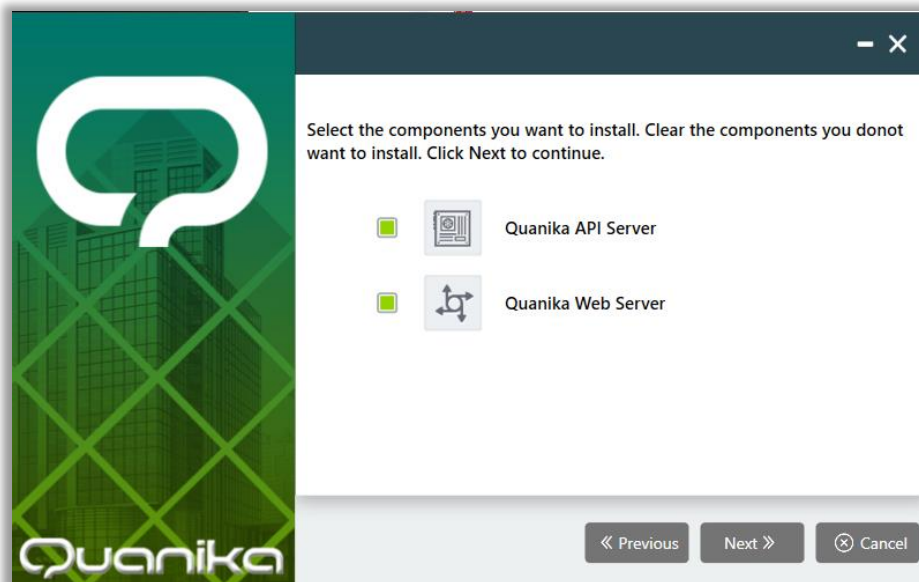




Quanika Web Application requires following two components to be installed

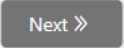
1. Quanika API Server
2. Quanika Web Server

Select both components and press  to continue .



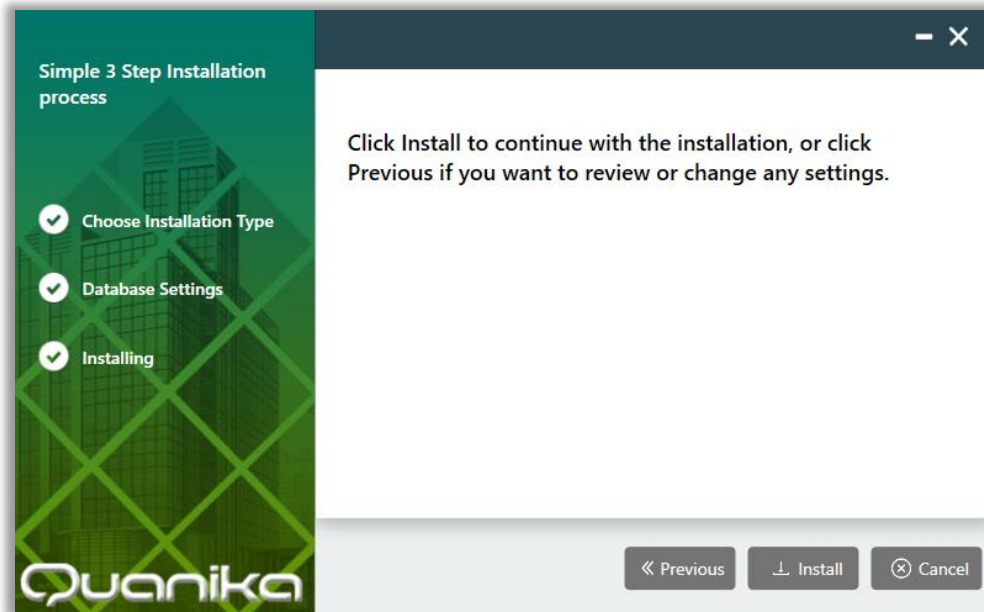
After clicking **Next**. This following screen appears with auto generated settings as per system.

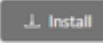


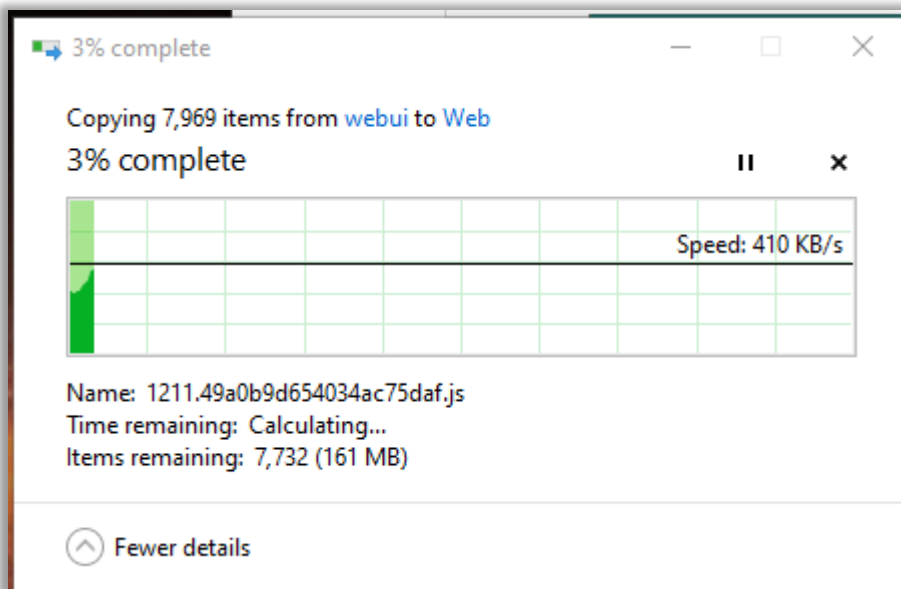
Any settings can be altered as desired like port, storage location, web server name and IP address. Please make sure to input the IP Address or host name of the system where installation is executed. Click  to continue once Web Server is configured .



All settings are auto generated as per system but it can be modified as desired. Please note API Server IP Address must use current system hostname or IP Address. Click on **Next** to continue.



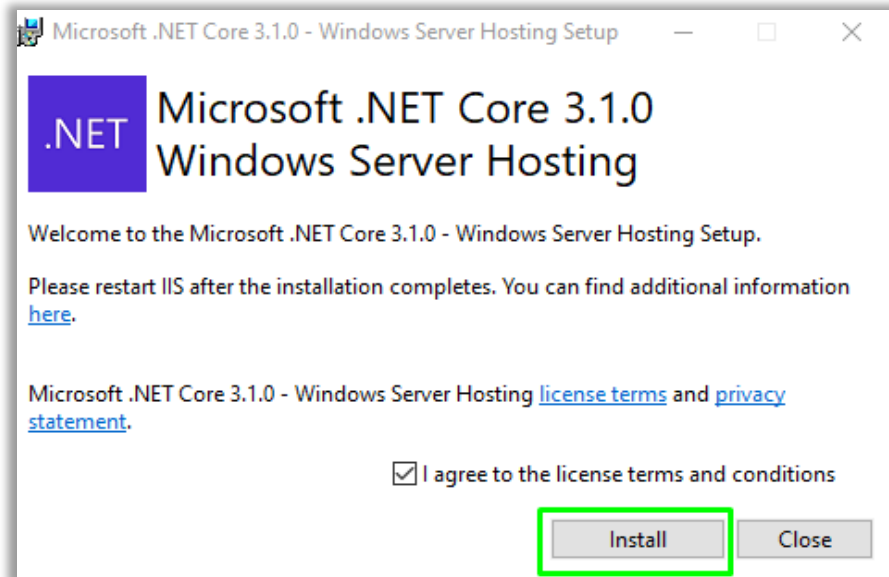
Click on  to initiate the installation .



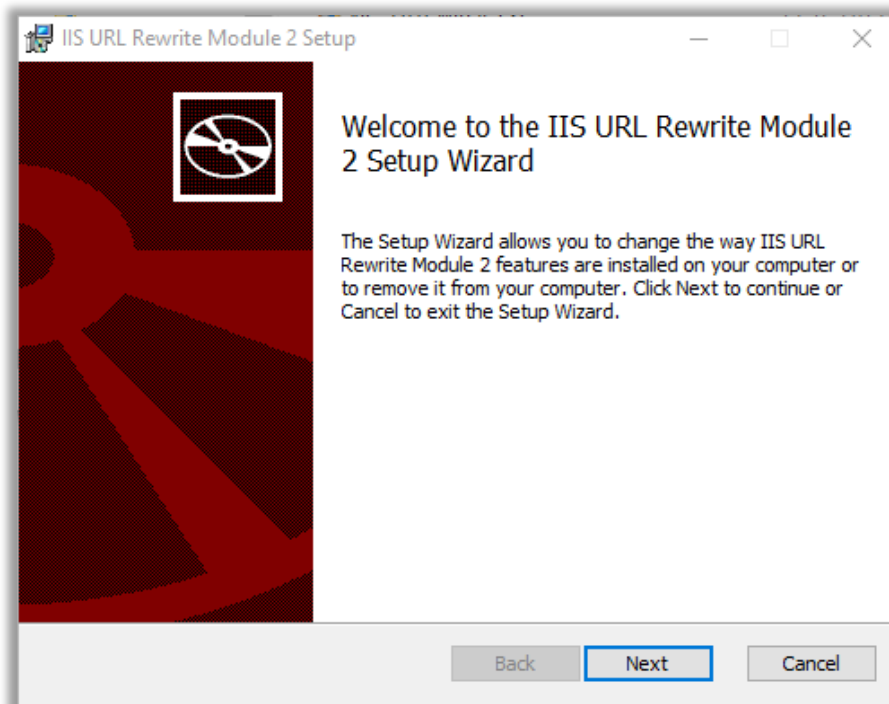
Files Copying will be initiated.

Quanika Web application requires two following components that will be installed along with installation of Quanika Web server and Quanika API server

1. Microsoft .NET Core 3.1.0 Windows Server Hosting
2. IIS URL Rewrite Module 2



Click on Install to continue. After this installation IIS URL Rewrite module will continue



Click **Finish** to complete the installation.



### VLC Media Player & Axis Media Control

By selecting this option, it will install VLC media player.

☒  VLC Media Player

VLC Media player is third party tool required to play videos in Q-Vision along with Axis Media Control. Please select both options for Q-Vision to function properly.

### Microsoft Report Viewer & CLR Types for SQL Server 2014

Microsoft Report View and CLR types are mandatory to install for Reports in Quanika Application.

### Microsoft SQL Server 2016

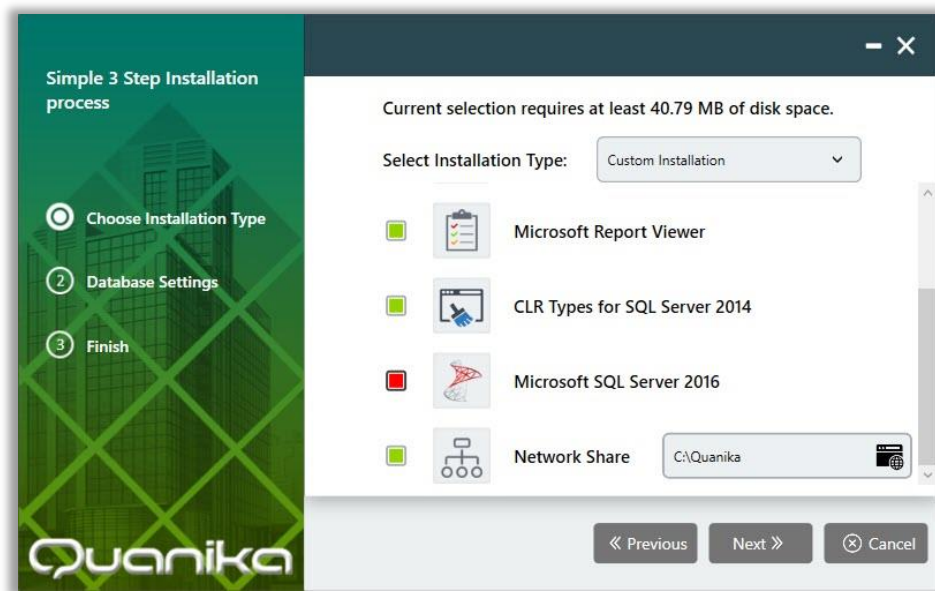


FIGURE 7

If Microsoft SQL Server 2016 is already installed on your computer, the check box against it, will be red indicating a previous installation.



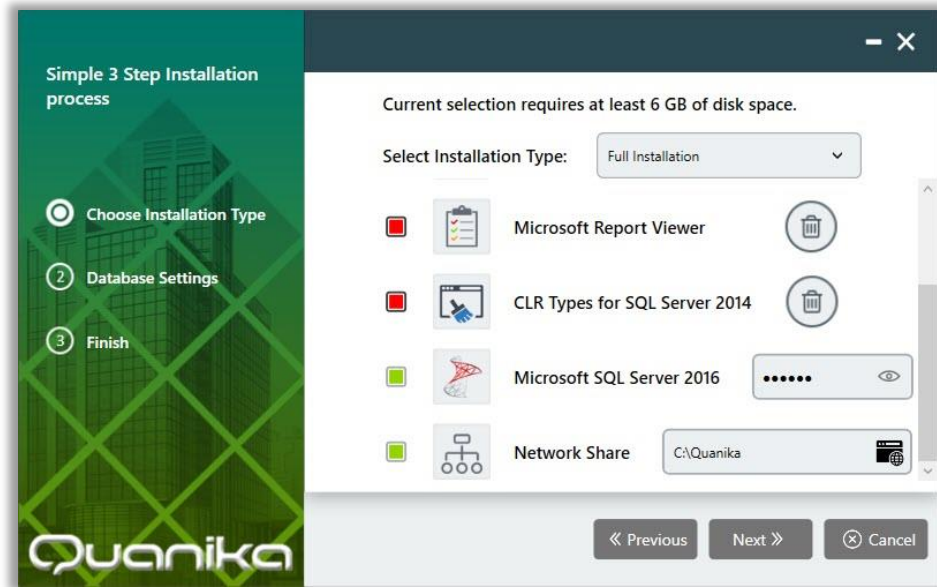


FIGURE 8

Selecting the **Microsoft SQL Server 2016** check box, will display a password field.

The password field contains the password which is used for SQL Server authentication.

This password and its corresponding username is set by the system administrator.

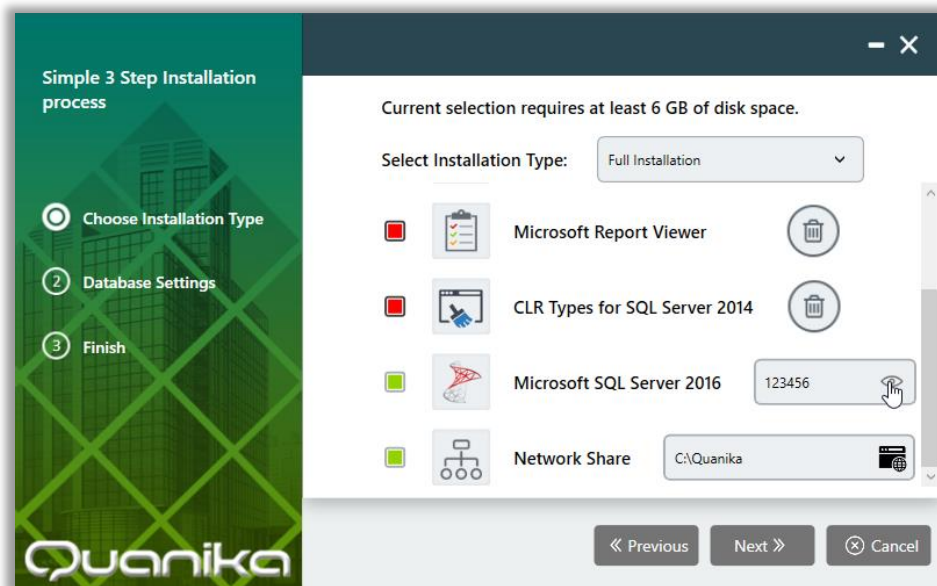
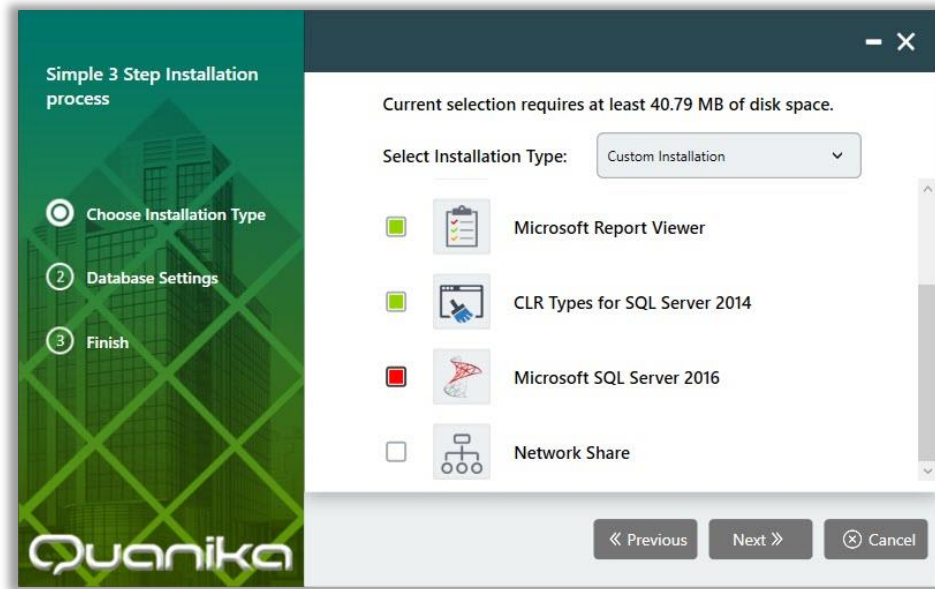


FIGURE 9



Clicking on the **eye icon** (  ) will reveal the password.

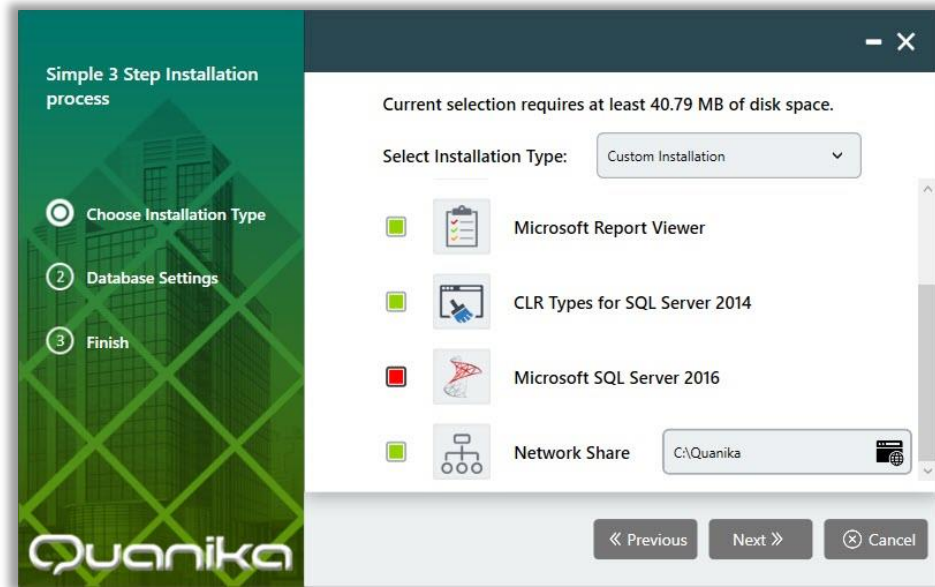
The password for Microsoft SQL Server is set during the installation process to create an instance of the Quanika database.



**FIGURE 10**

Scroll down the list of components to view and select the remaining components.

### [Network Installation](#)

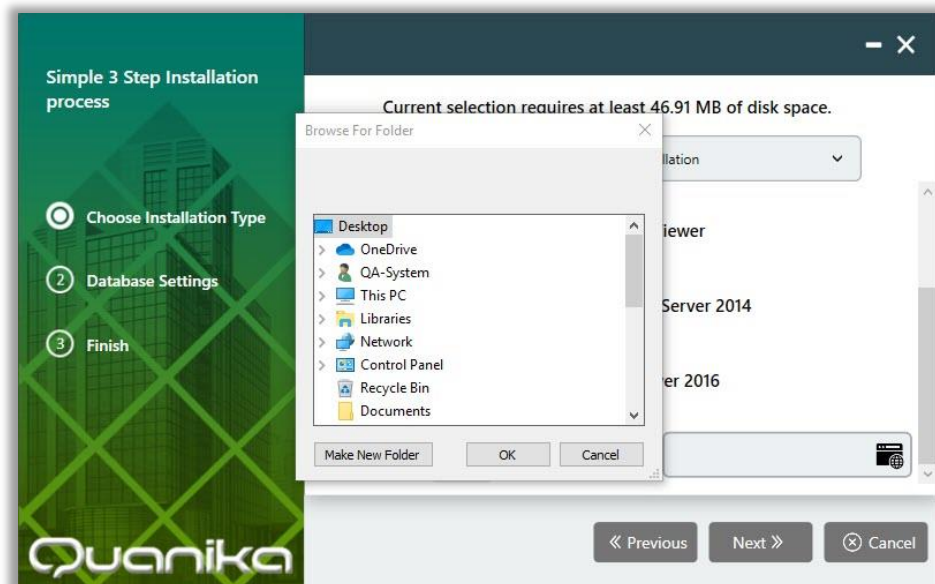


**FIGURE 11**

Selecting the Network Share check box will display the current shared location.


Users on the network can access this location for the Quanika Application setup.

Selecting this option also eliminates the need to download large setup files every time.



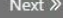
**FIGURE 12**



Click on the Browse button (  ) to display the file explorer window.

Choose the shared location on the computer or network for the Quanika application setup.

Next >>

Click on the Next button (  ) to proceed to Step 2 of the installer.

## Configuring Quanika Database

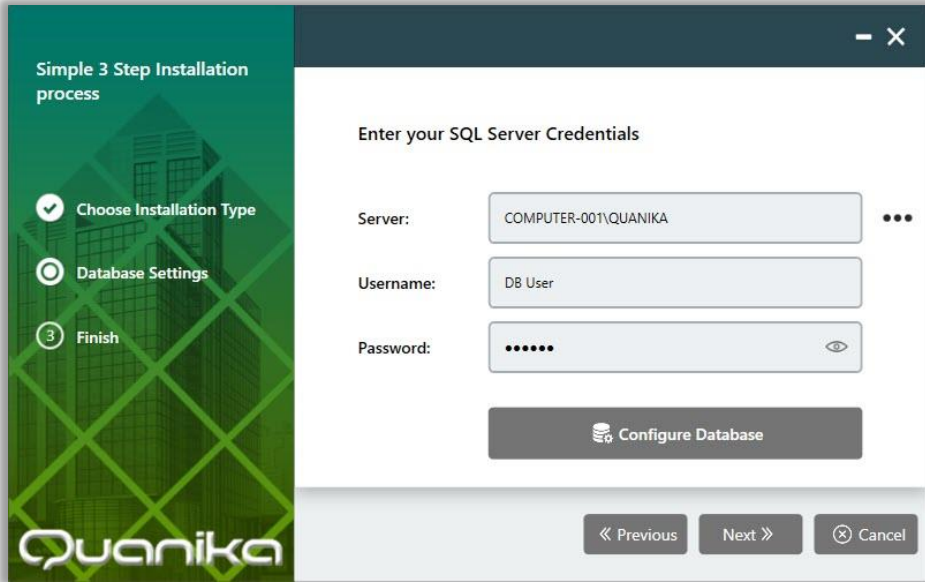
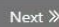



FIGURE 13

The Database Settings window appears.

Clicking on the Next (  ) button in this window will not move to the next installation step until all required information is entered and the SQL Database instance is configured.

### Scenario 1: SQL Server already installed

The information required for this form includes the SQL Server address, username and the password for the Quanika SQL server database instance.

If SQL Server is already installed on your computer, click on the Ellipses button (  ) besides the **Server** field to open a list of existing Quanika database instances.

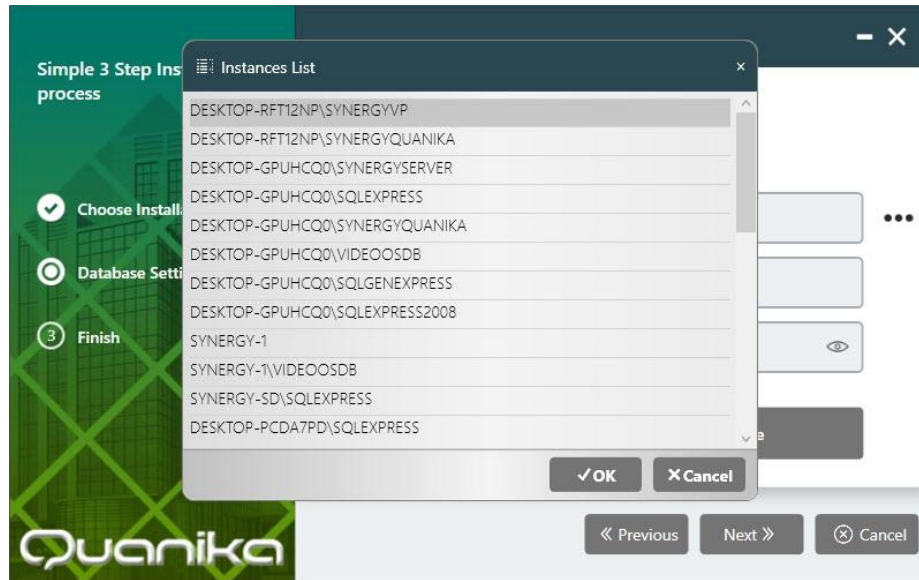



FIGURE 14

Click to choose the Quanika database instance as required.

Click on the OK button (  ) to select it.

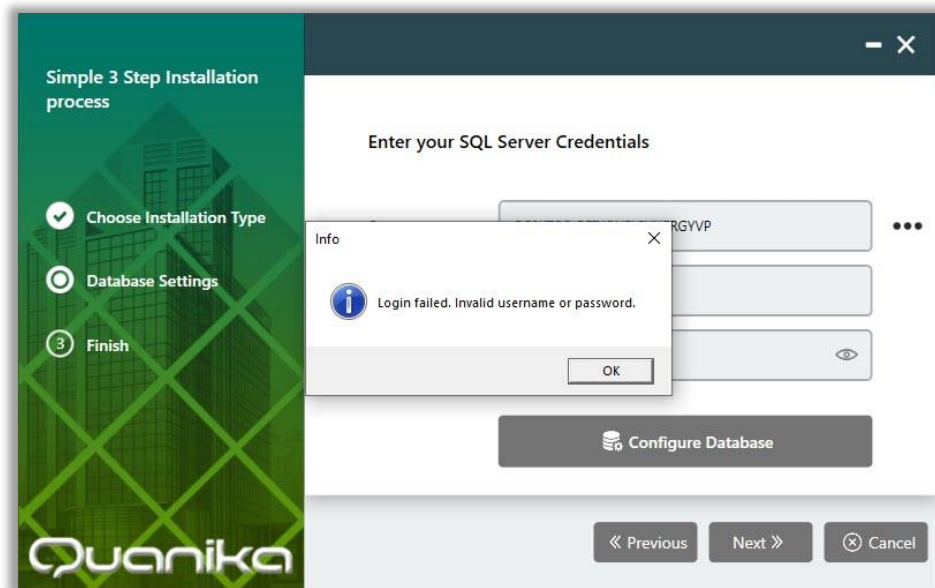


FIGURE 15

If either the username or password is incorrect, a “**login failed...**” pop up message window will appear. Click the **OK** button on this window and re-enter your database username and password.

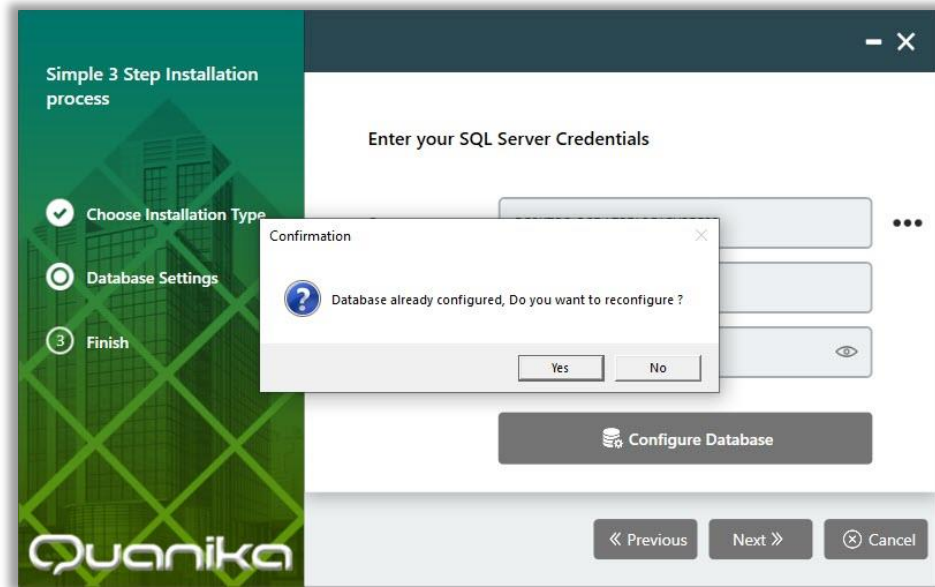
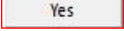


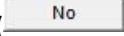
FIGURE 16

If the Quanika database already exists on selected instance, a **“Database already configured...”** confirmation message window will appear.

This installation step requires utmost care.

In the window which appears, clicking the **Yes** button will overwrite the existing SQL database. All information will be lost. It is recommended to back up the current database before performing this process.

Click the **Yes** button () to reconfigure the database with the username and password which is entered.

If you click on the **No** button () the database settings will remain the same.

In both cases the installer will move to Step 3 after processing the request.



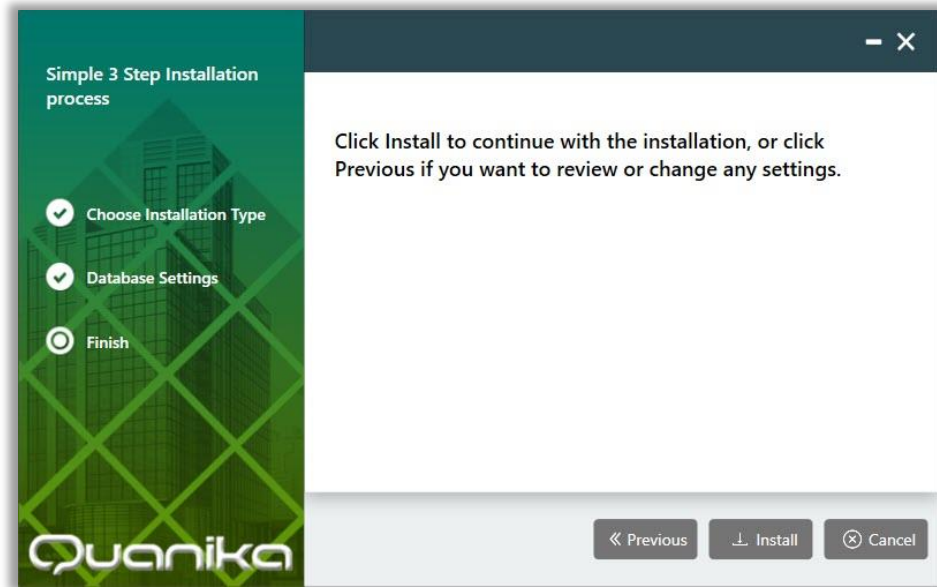



FIGURE 17

Click on the Install button (  ) to proceed with the installation. All selected components will be installed one after another. The setup process for all components is similar.

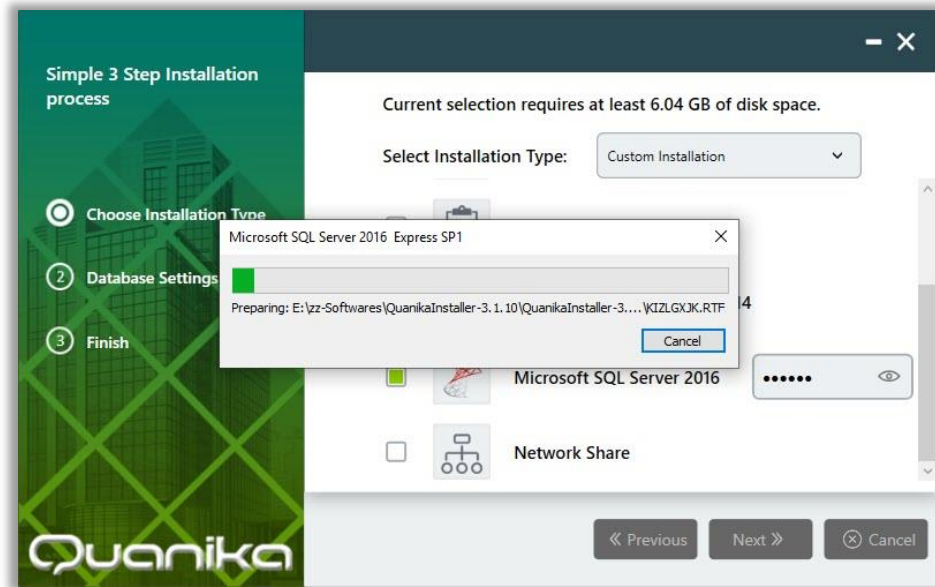
### Scenario 2: SQL Server not previously installed

In case SQL Server is not previously installed on your computer then select the Microsoft SQL Server 2016 component.

Enter a password which will be used to access the database instance.

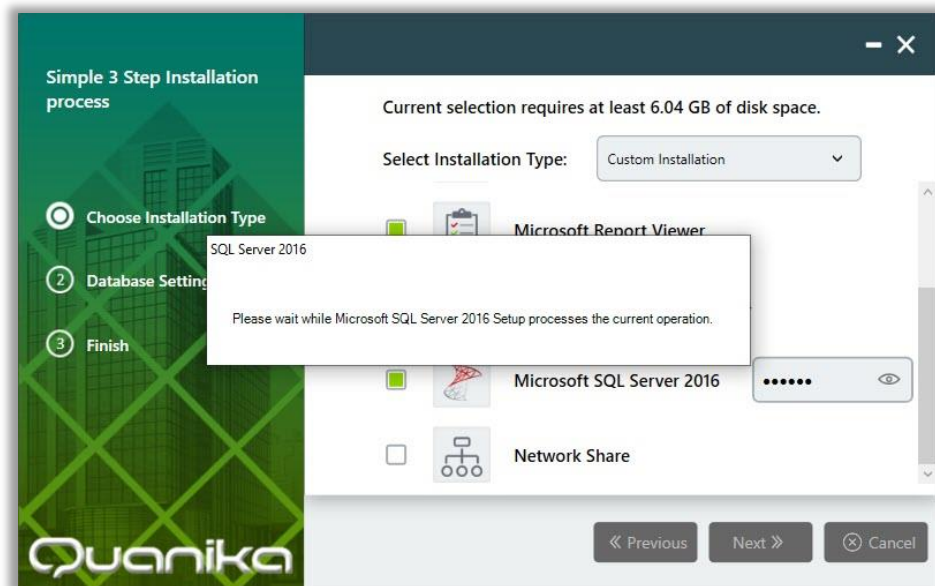
Click the Next button to proceed.

The following windows appear which display the various stages of installation.



**FIGURE 18**

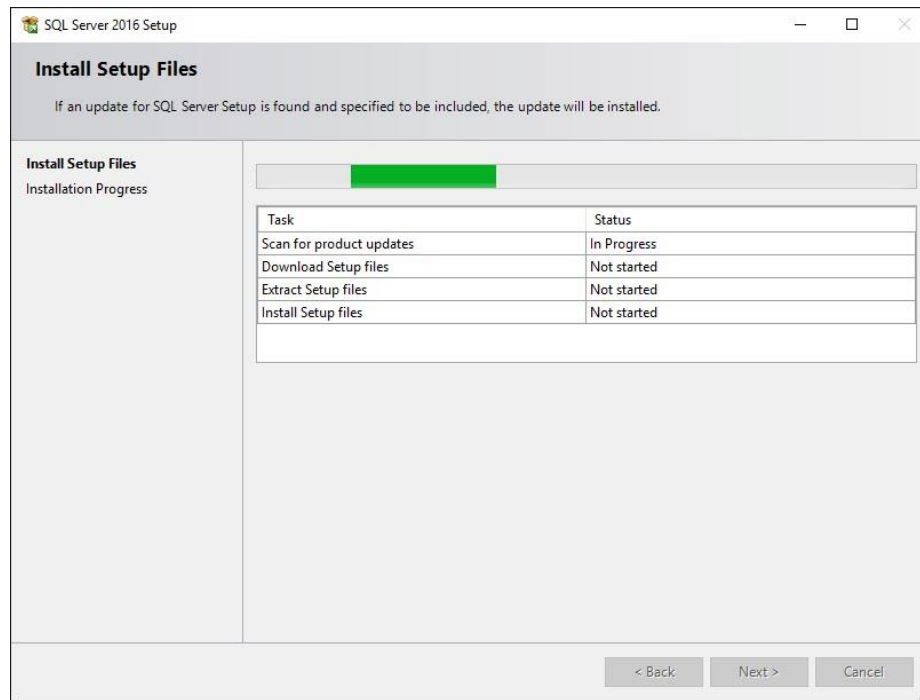
The SQL Server setup prepares the installation. The setup files are extracted to the computer.



**FIGURE 19**

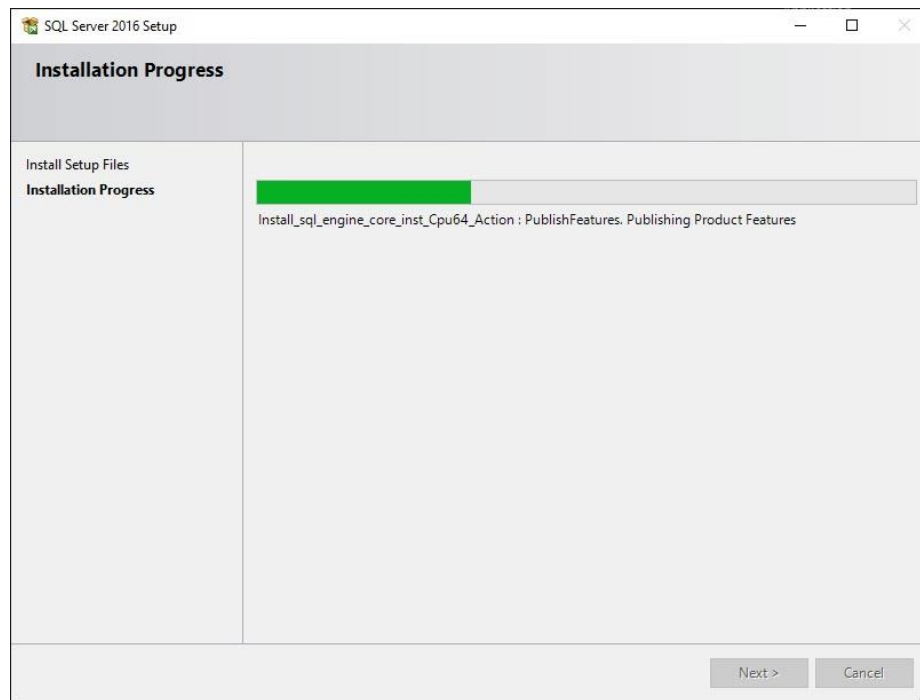
Next, the SQL Server installer processes the setup files.





**FIGURE 20**

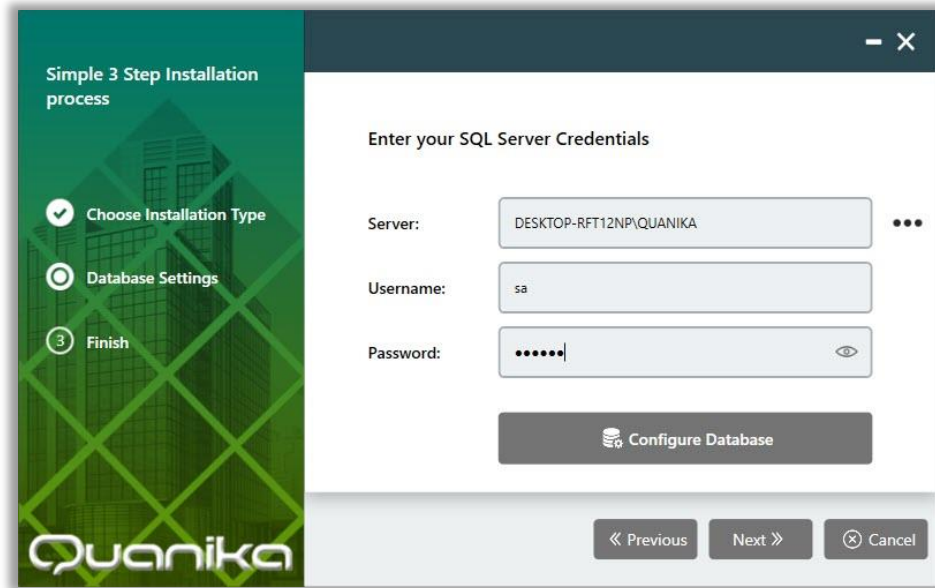
The SQL Server Setup window appears. The progress bar displays the completion status of various tasks.



**FIGURE 21**


The SQL Server Setup window appears. The progress bar displays the status of installation.

Once SQL Server installation is finished the SQL Server Credentials window appears.



**FIGURE 22**

The SQL Server credentials fields automatically contain pre-defined values for the Database name, Username and Password.

At this stage, click on the Install button () to proceed with the installation. All selected components will be installed one after another. The setup process for all components is similar.

## Completing Installation

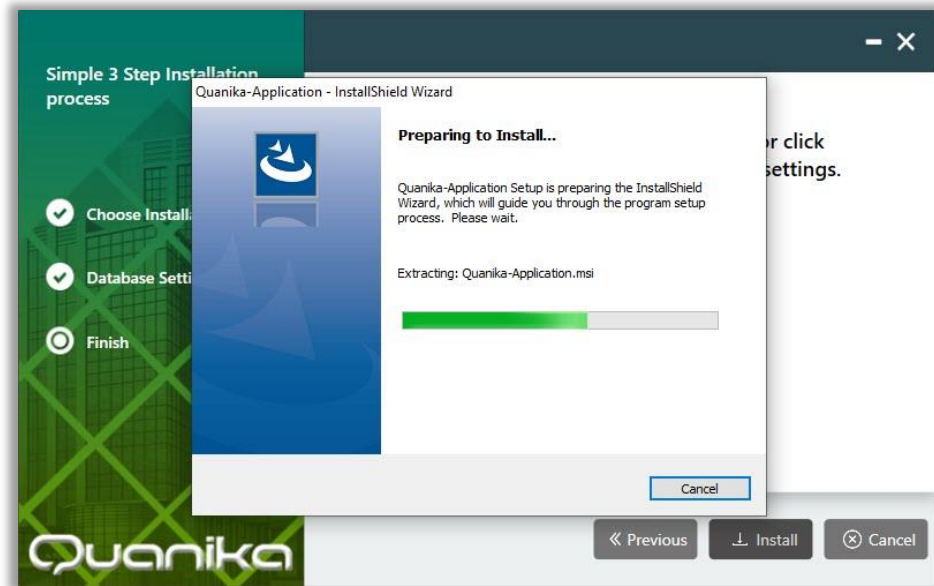


FIGURE 23

The Quanika application will be installed initially. The **“Preparing to Install...”** window appears. The progress bar displays the status of file processing. When it completes the next installation window appears.

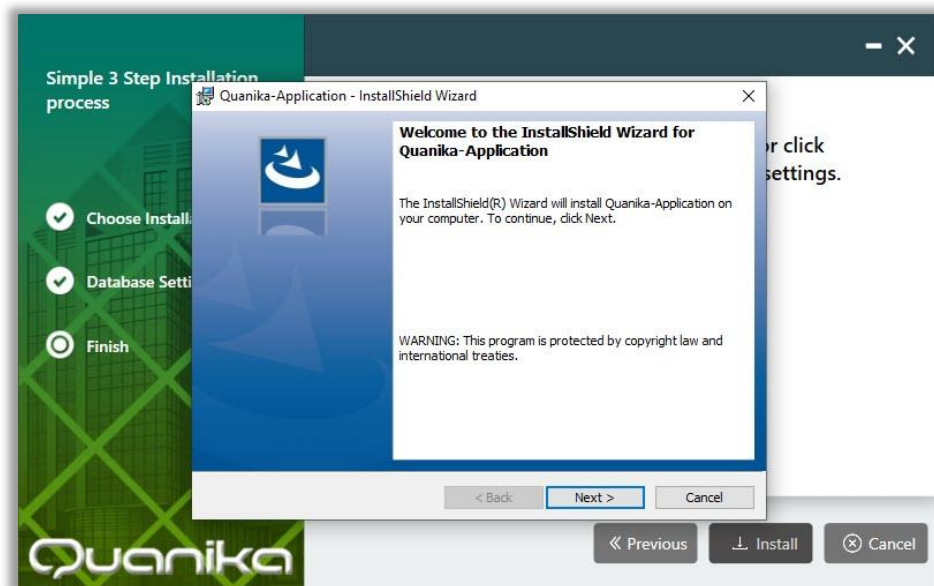
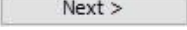


FIGURE 24

Next, the “Install Shield Wizard...” window appears. Click on the Next button (  ) in this window to proceed with the installation.

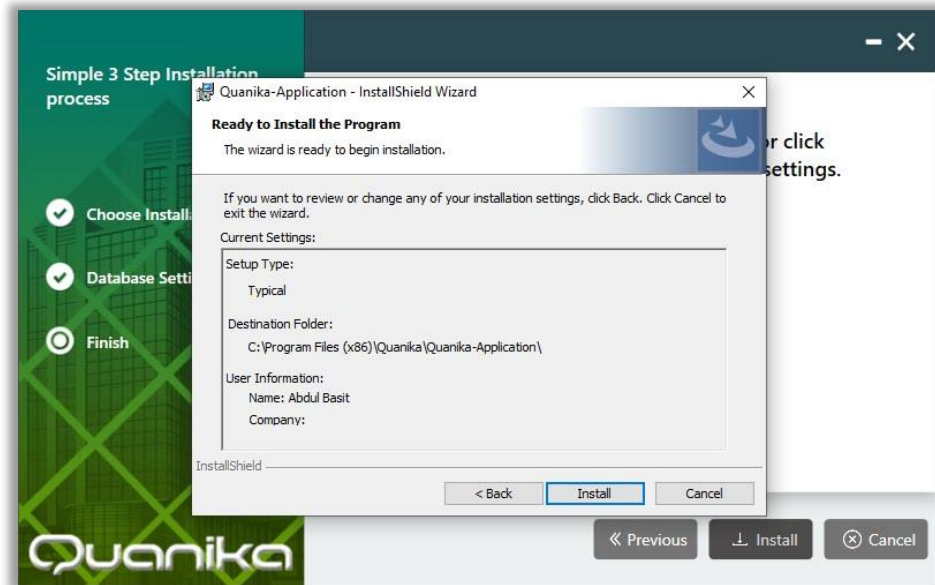
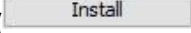


FIGURE 25

Next, the “Ready to Install...” window appears. Click on the Install button (  ) in this window to proceed with the installation.

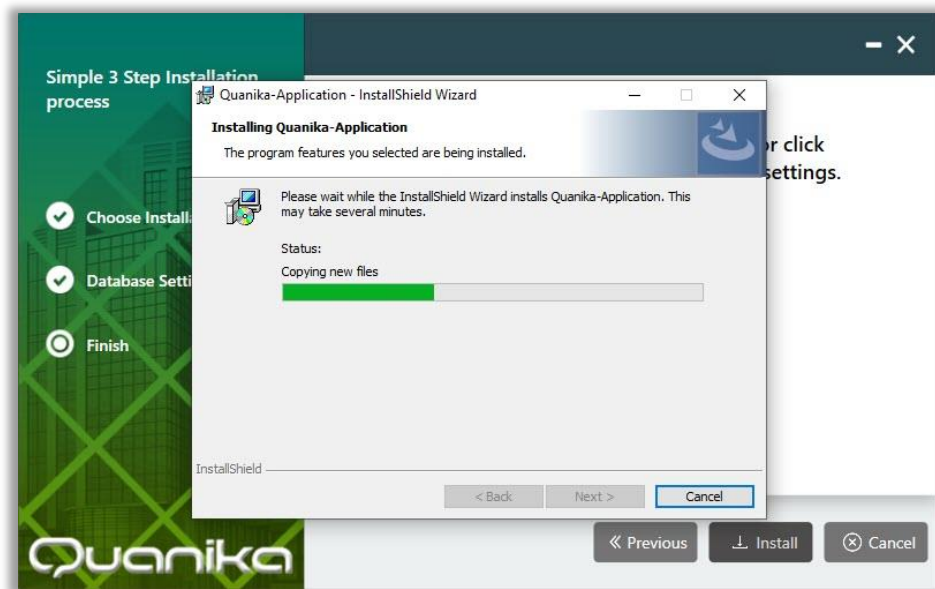


FIGURE 26

Next, the “Installing Quanika...” window appears. The progress bar displays the status of the application installation.

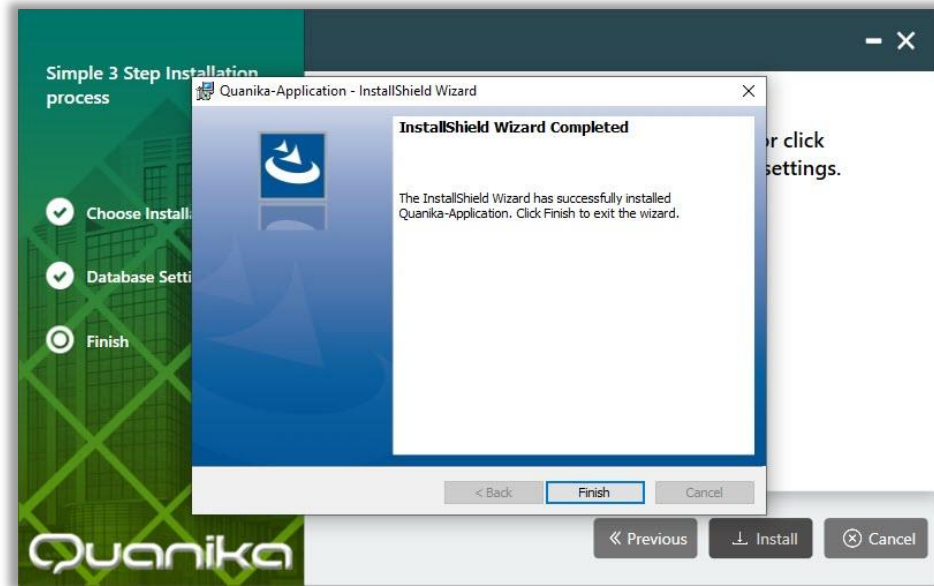
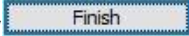


FIGURE 27

When the Install Shield Wizard has installed all the files, the “...Completed” window appears. Click on the Finish button (  ) in this window to complete the installation of the Quanika application.

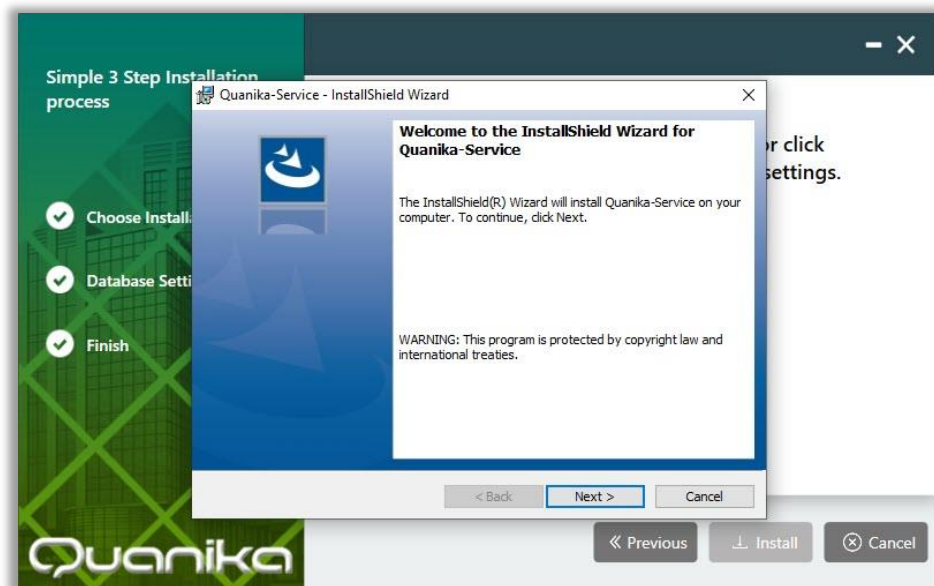
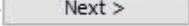


FIGURE 28

Next, installation of the Quanika service is initialized. Click on the Next button (  ) in this window to proceed with the installation.

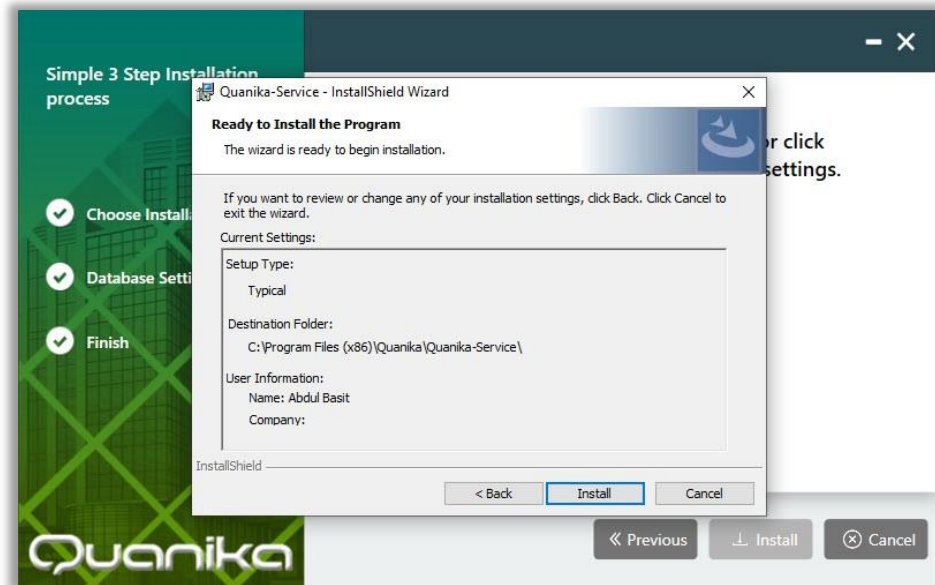
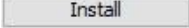


FIGURE 29

Next, the “Ready to Install...” window appears. Click on the Install button (  ) in this window to proceed with the installation.

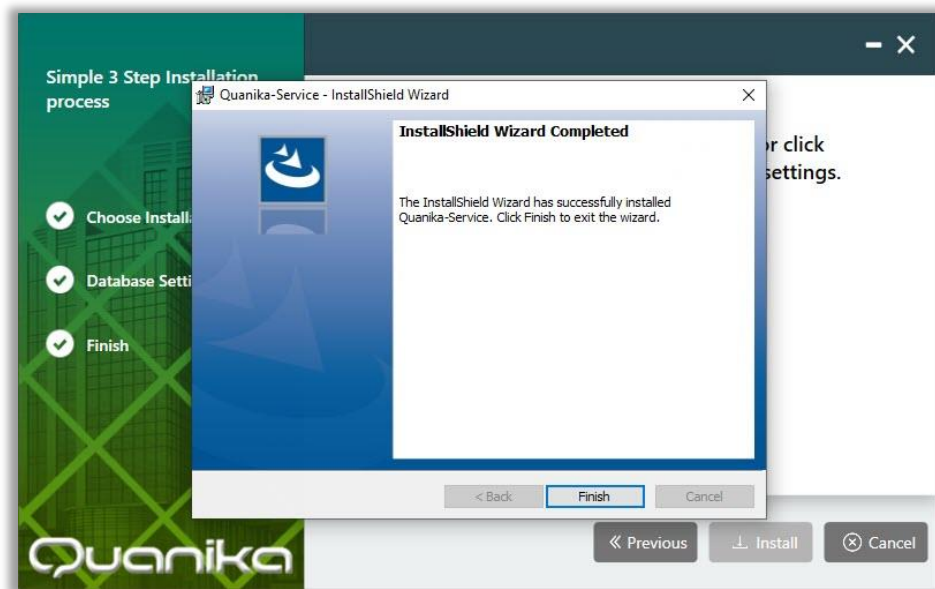
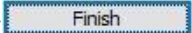


FIGURE 30



When the Install Shield Wizard has installed all the files, the “...Completed” window appears. Click on the Finish button (  ) in this window to complete the installation of the Quanika service.

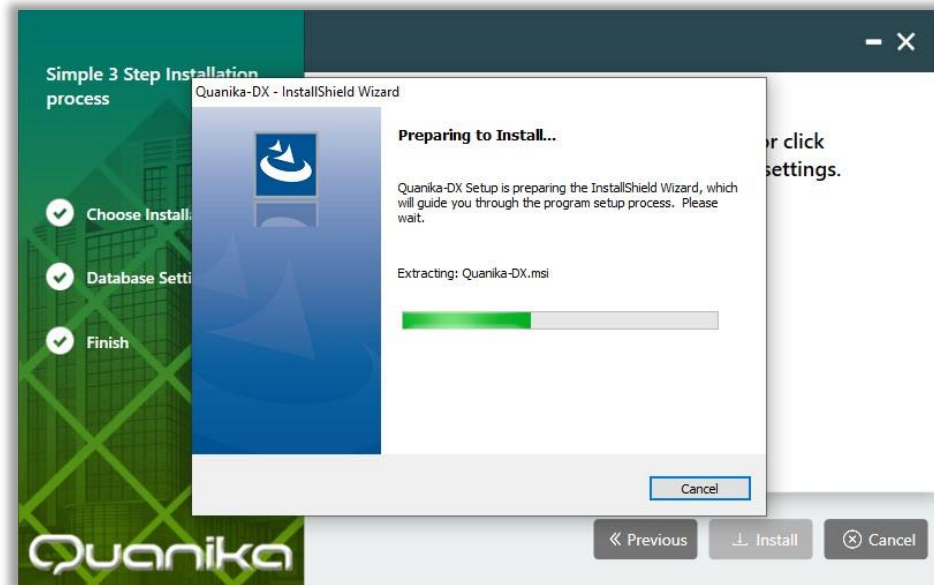


FIGURE 31

The Quanika-DX is installed next. The “Preparing to Install...” window appears. The progress bar displays the status of file processing. When it completes the next installation window appears.

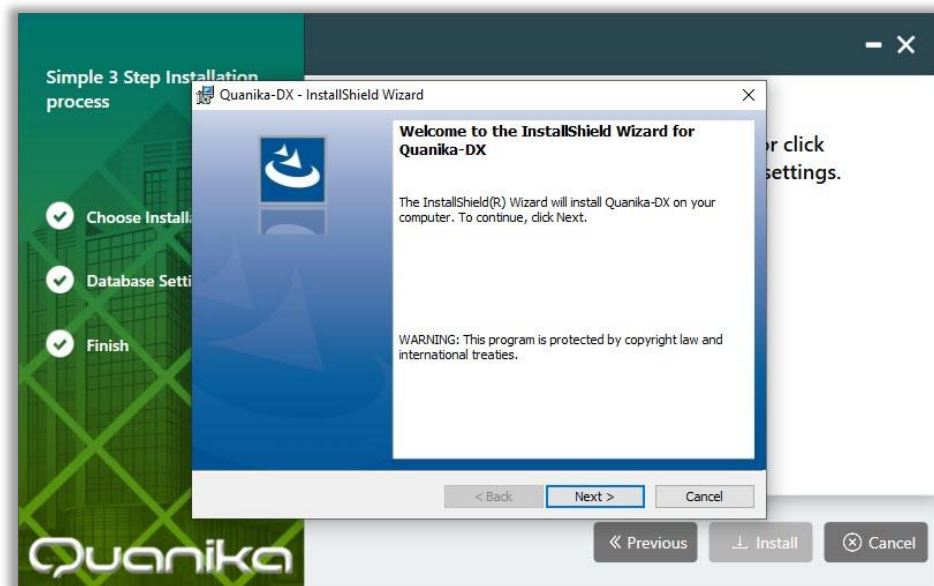
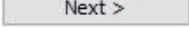


FIGURE 32

Installation of the Quanika-DX is initialized. Click on the Next button (  ) in this window to proceed with the installation.

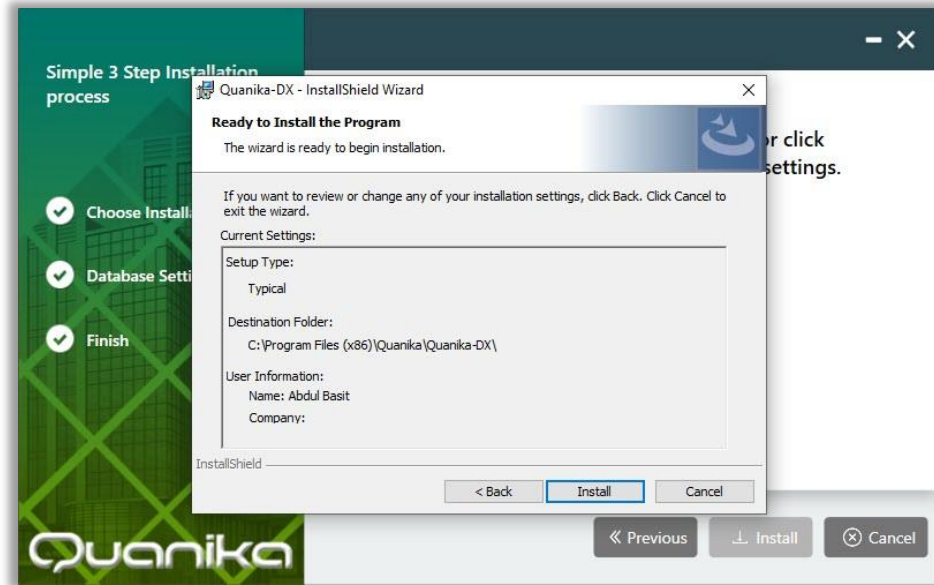
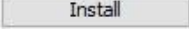


FIGURE 33

Next, the “Ready to Install...” window appears. Click on the Install button (  ) in this window to proceed with the installation.

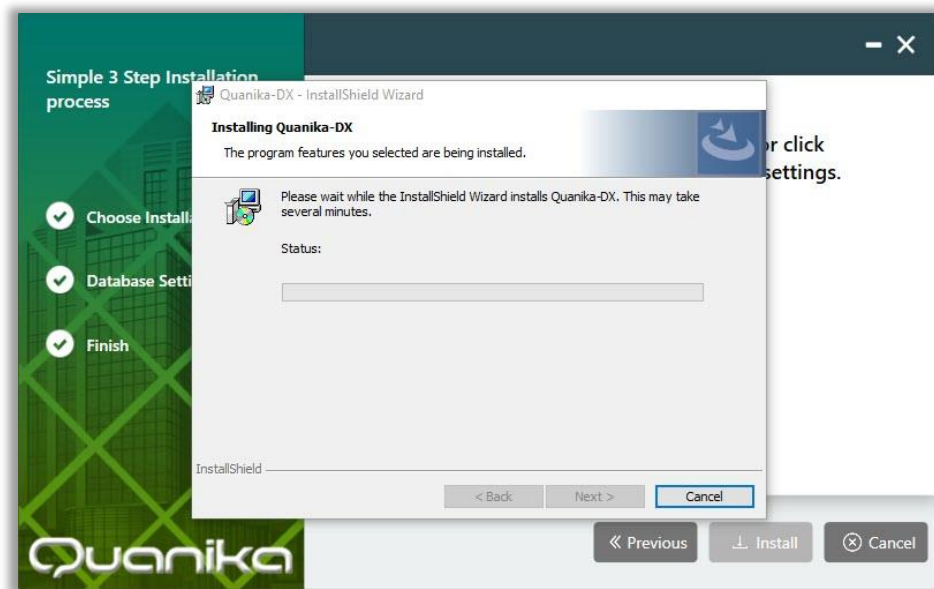


FIGURE 34



Next, the “Installing Quanika DX” window appears. The progress bar displays the status of the application installation.

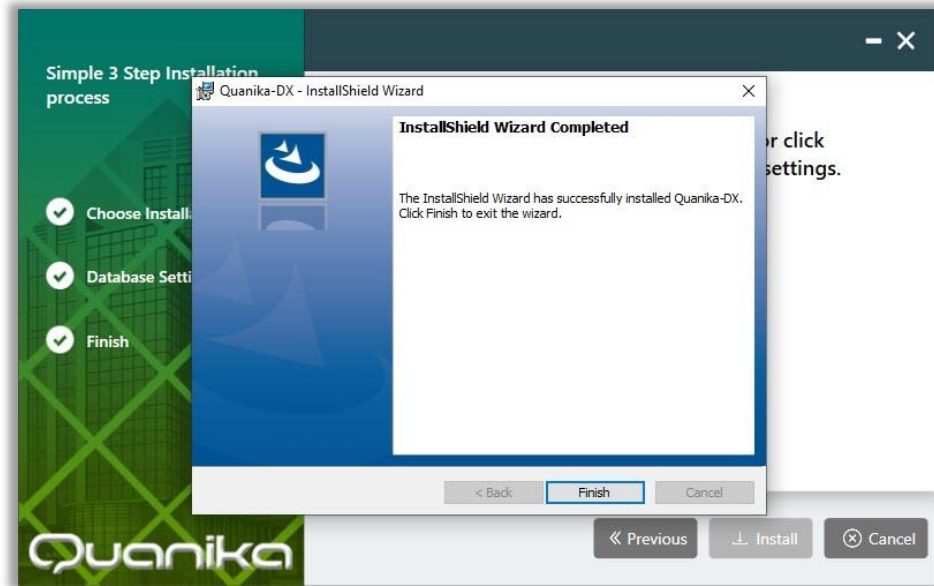
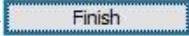


FIGURE 35

When the Install Shield Wizard has installed all the files, the “...Completed” window appears. Click on the Finish button (  ) in this window to complete the installation of the Quanika-DX.

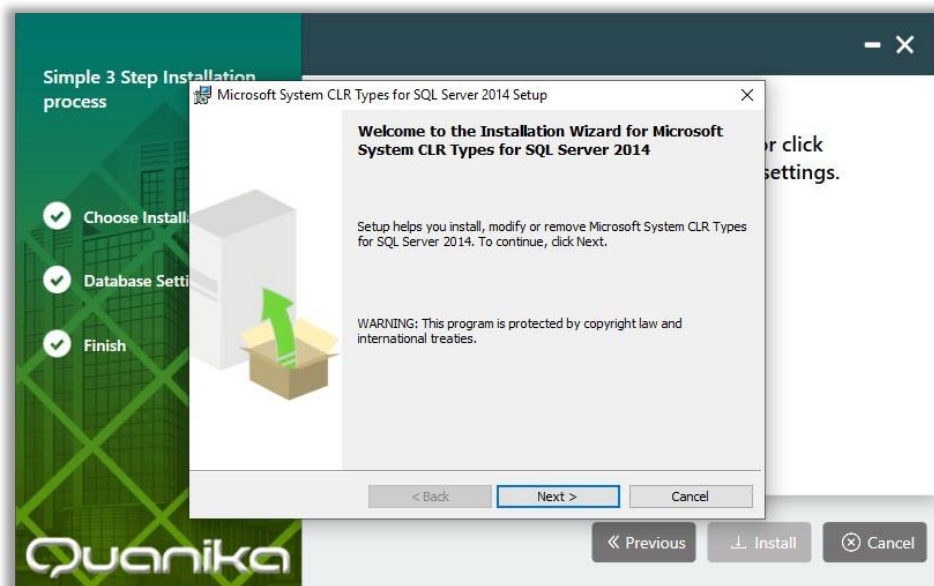
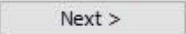


FIGURE 36

Next, the “Installation Wizard...” window appears for Microsoft System CLR Types for SQL Server 2014. Click on the Next button (  ) in this window to proceed with the installation.

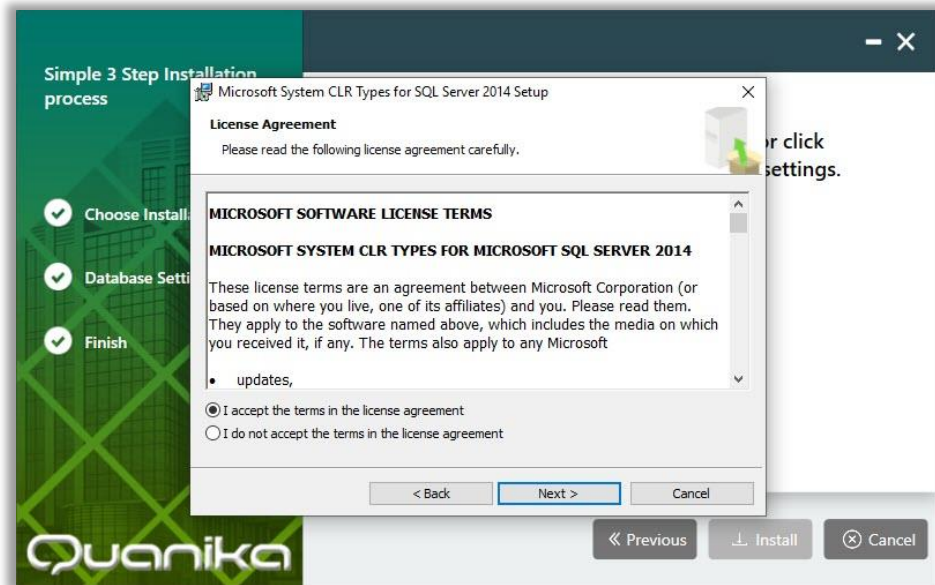
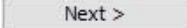


FIGURE 37

Select the “I accept the terms...” radio button in this window and then click the Next button (  ) in this window to proceed with the installation.

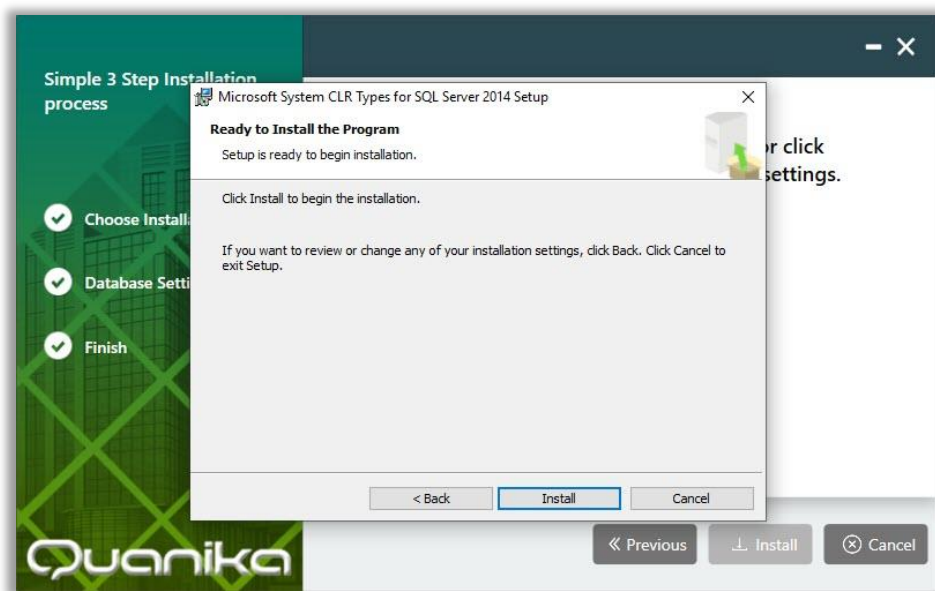
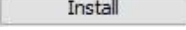


FIGURE 38

Next, the “Ready to Install...” window appears. Click on the Install button (  ) in this window to proceed with the installation.

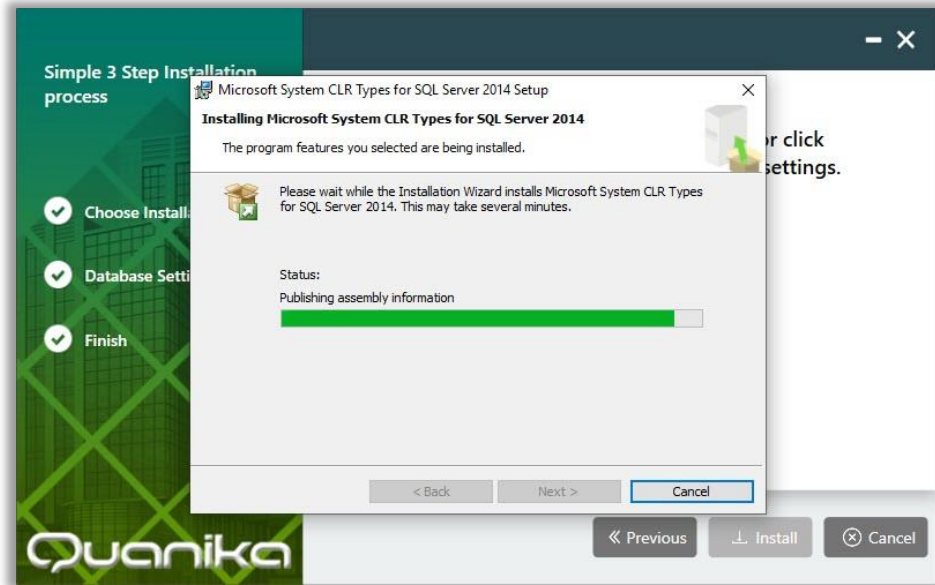


FIGURE 39

Next, the “Installing Microsoft System...” window appears. The progress bar displays the status of the application installation.

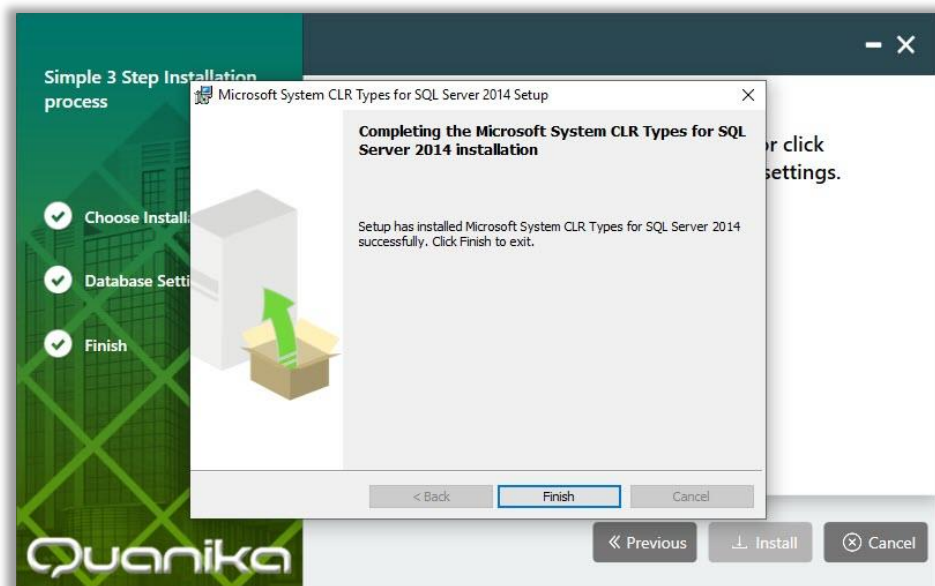
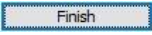


FIGURE 40

When the Wizard has installed all the files, the “...Completing” window appears. Click on the Finish button (  ) in this window to complete the installation of the Microsoft System CLR Types for SQL Server 2014.

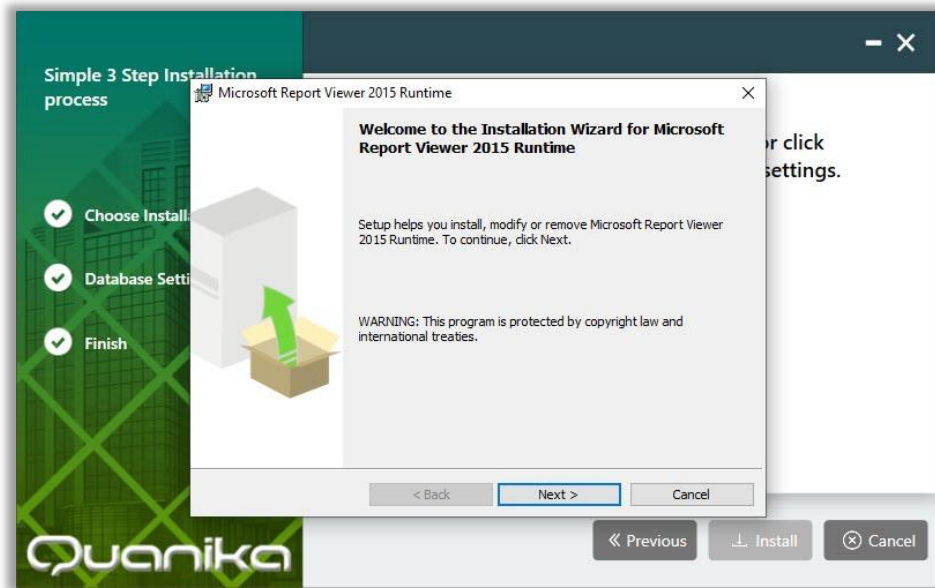
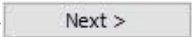


FIGURE 41

Next, the “Installation Wizard...” window appears for Microsoft Report Viewer 2015 Runtime. Click on the Next button (  ) in this window to proceed with the installation.

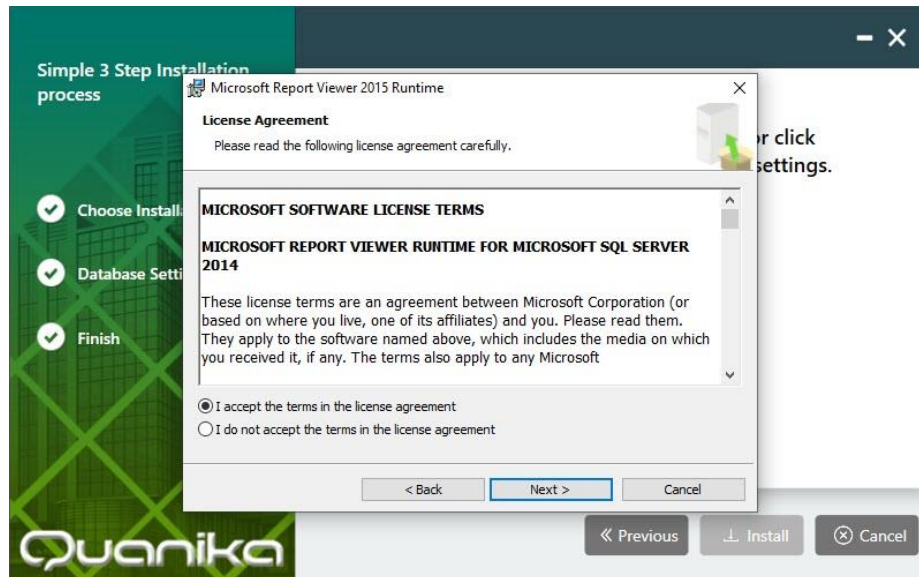
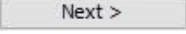
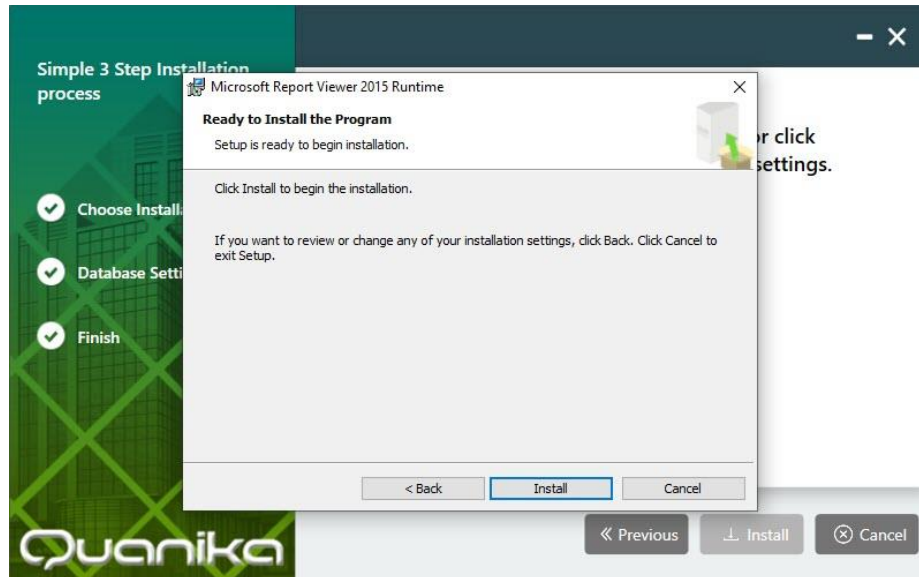
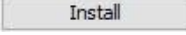


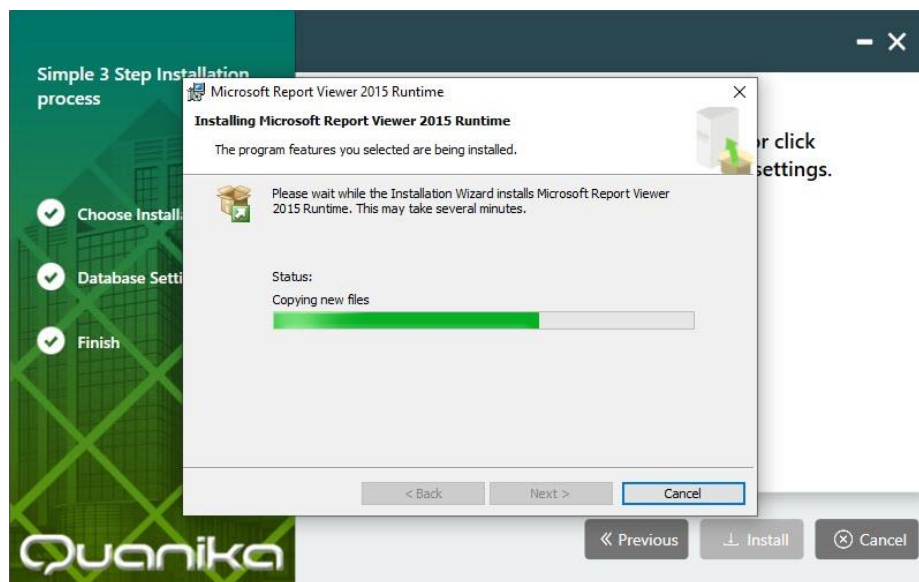
FIGURE 42

Select the “**I accept the terms...**” radio button in this window and then click the Next button (  ) in this window to proceed with the installation.



**FIGURE 43**

Next, the “**Ready to Install...**” window appears. Click on the Install button (  ) in this window to proceed with the installation.



**FIGURE 44**

Next, the “**Installing Microsoft Report...**” window appears. The progress bar displays the status of the application installation.



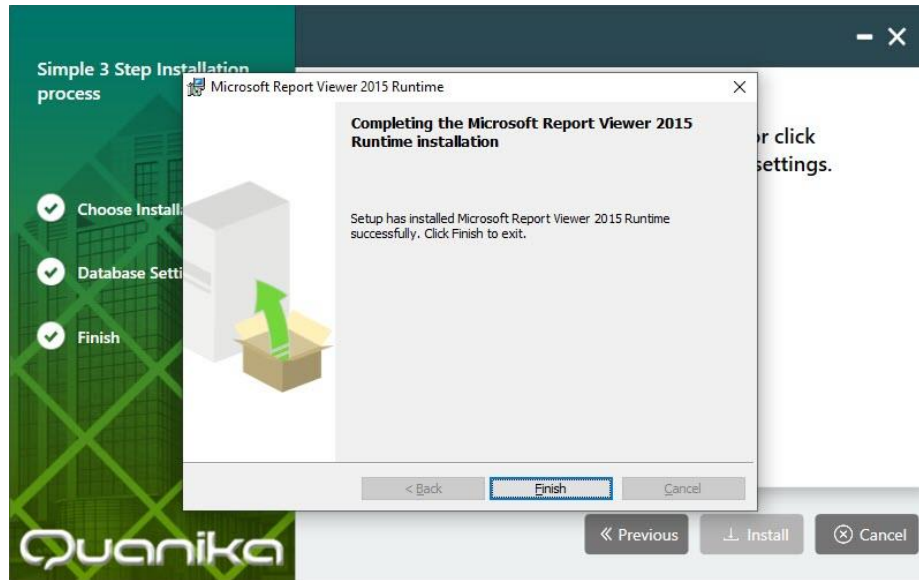
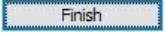


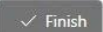
FIGURE 45

When the Wizard has installed all the files, the “...Completing” window appears. Click on the Finish button (  ) in this window to complete the installation of the Microsoft Report Viewer 2015 Runtime.

## Finish Installation



FIGURE 46

Step 3 completes, after the installation of all the Quanika software components. The final installer window appears. Click on the Finish button (  ) to complete the installation and exit the Quanika installer.

## License Registration



A shortcut icon (Quanika Application) for the Quanika application is created on the desktop of the computer. Double click on it to launch the Quanika application. When the application is run for the first time it will ask for a license. Click on Request License to generate request for license if license exists click on Validate License to activate the application.

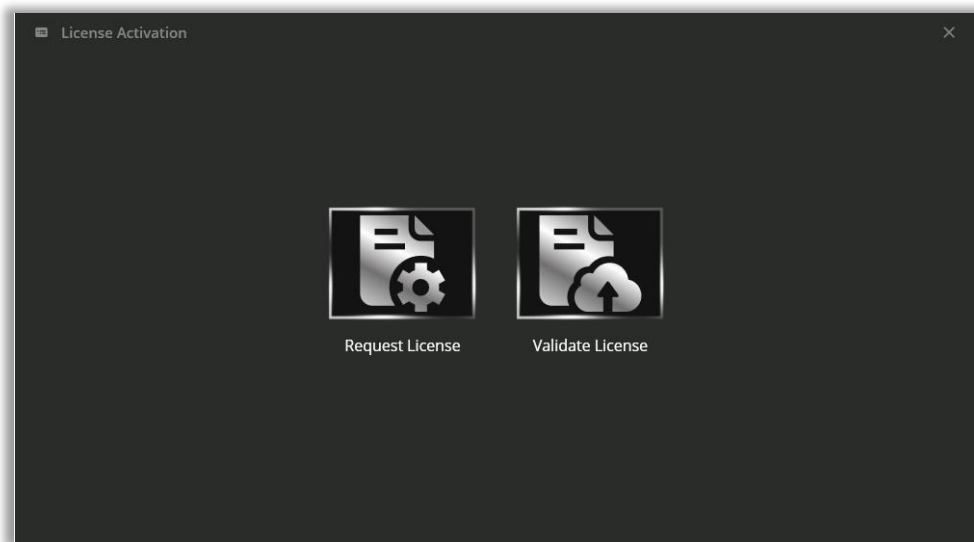
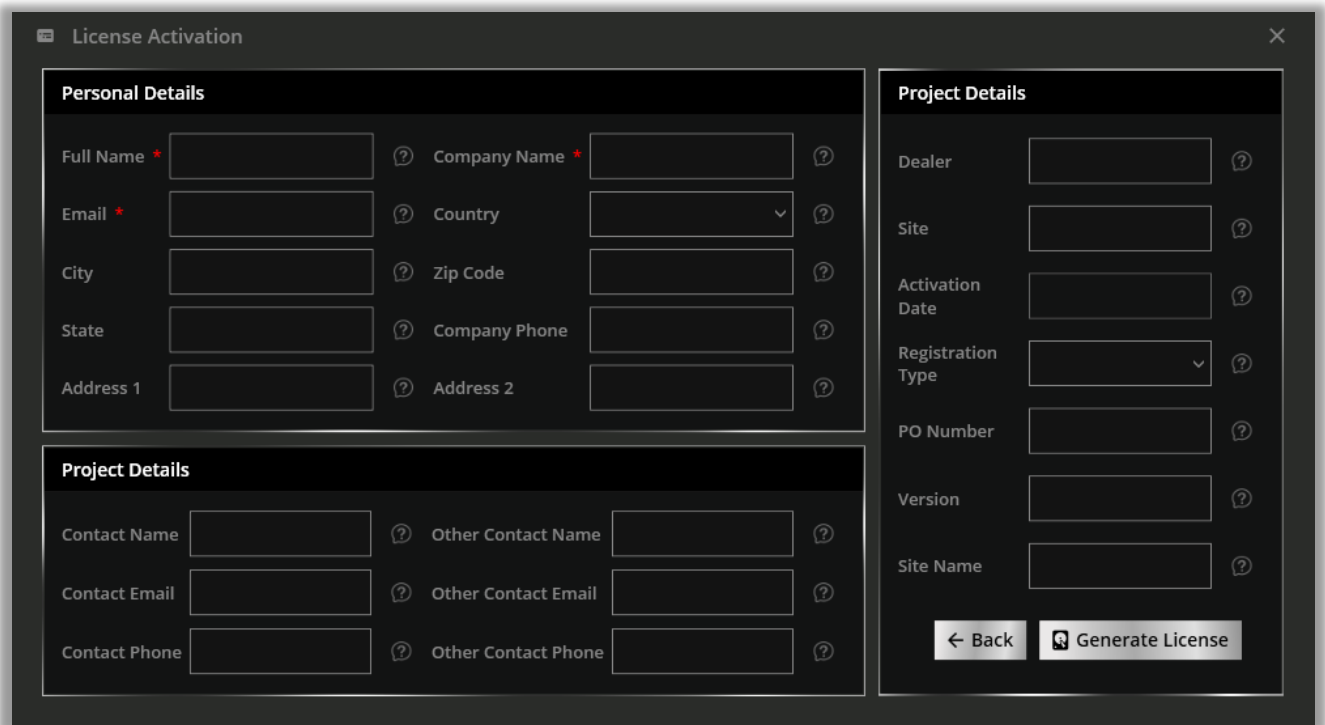


FIGURE 47

To acquire a new license, a license request needs to be generated. Enter the required information marked with \* in the **"License Request"** form.



The License Activation window is divided into two main sections: Personal Details and Project Details.

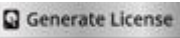
**Personal Details:**

- Full Name \*
- Email \*
- City
- State
- Address 1
- Company Name \*
- Country
- Zip Code
- Company Phone
- Address 2

**Project Details:**

- Contact Name
- Contact Email
- Contact Phone
- Other Contact Name
- Other Contact Email
- Other Contact Phone
- Dealer
- Site
- Activation Date
- Registration Type
- PO Number
- Version
- Site Name

At the bottom right, there are two buttons: "Back" and "Generate License".

Click on  to generate a license request file .

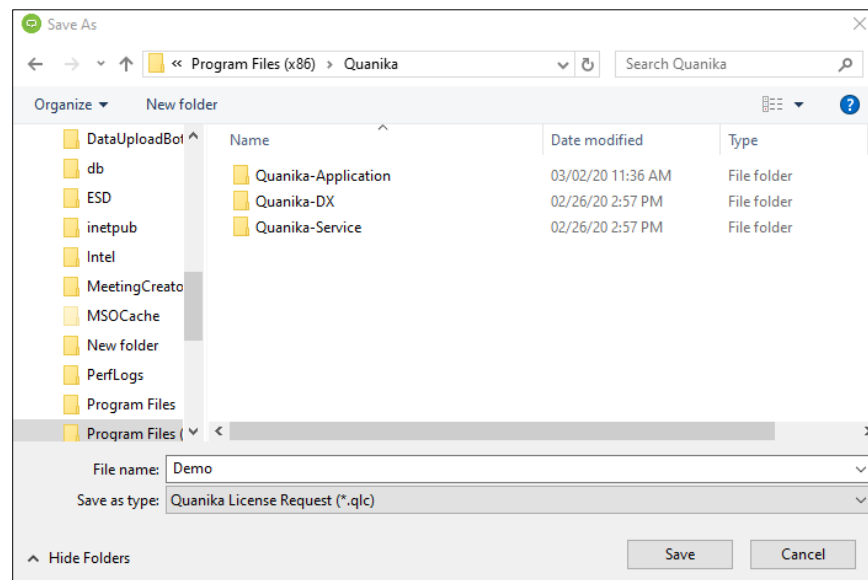


FIGURE 48

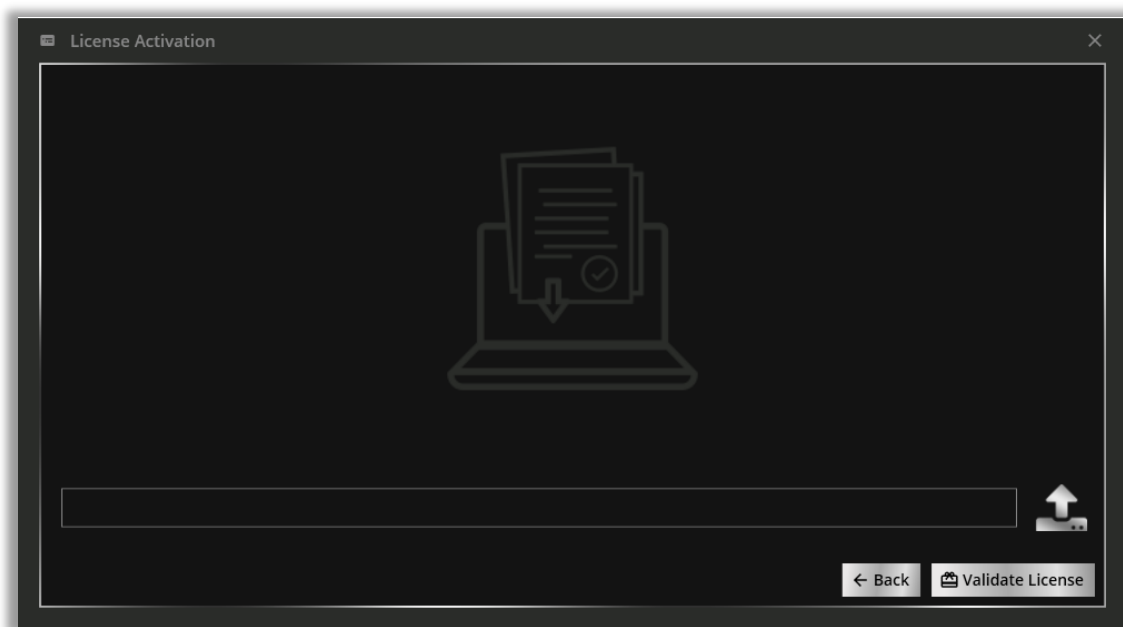
Specify a name as desired and save the **Quanika License Request (.qlc)** file.

Quanika support will generate a license based on the **.qlc** file. License files are emailed to the user.





After the license is acquired click on Validate License to validate the license.

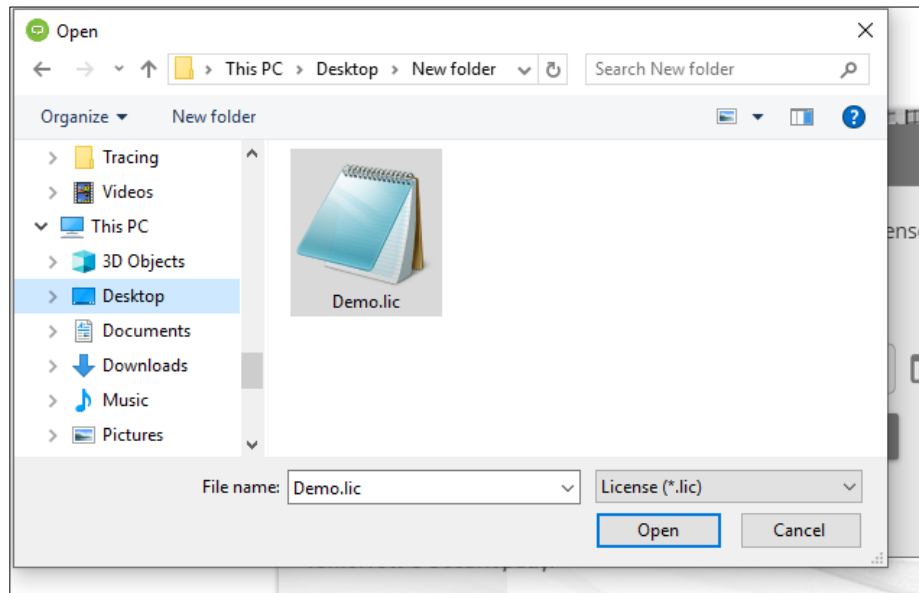
The Quanika license consists of two files. A **“.dat”** file and a **“.lic”** file. Save both these files on the computer.



**FIGURE 49**

After saving the files, click on the Validate License option (  Validate License ) button, in the License Activation window.

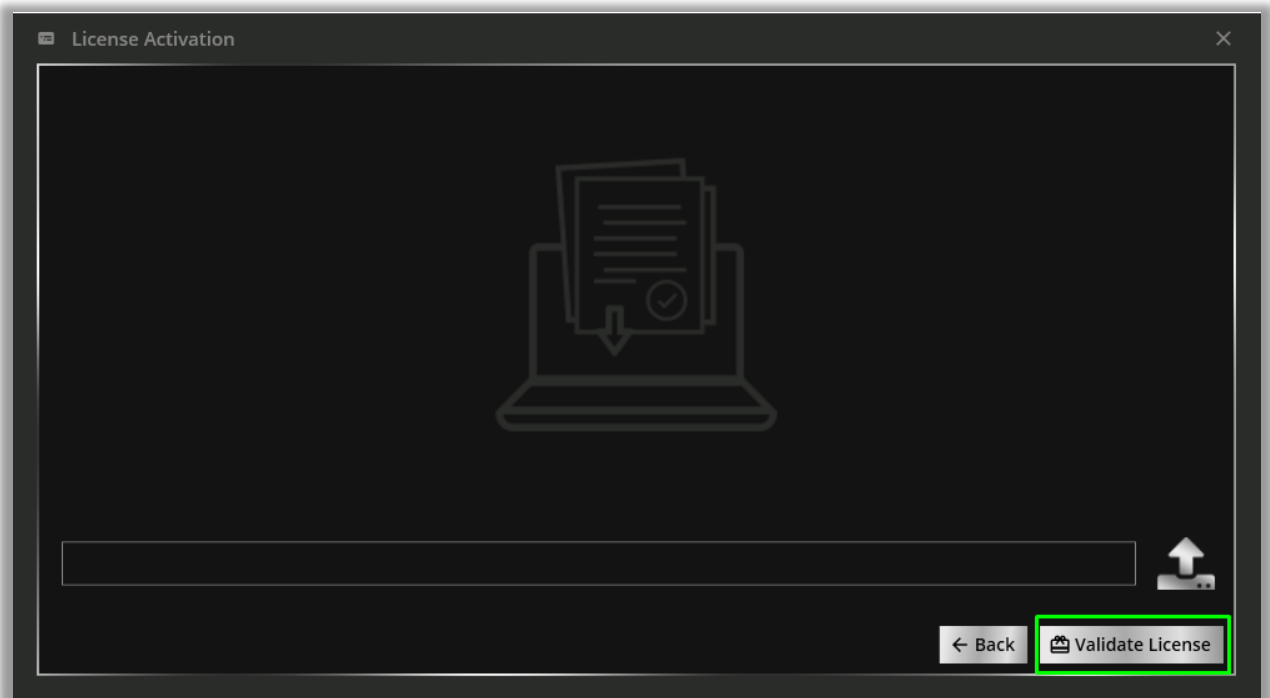
Click on the Browse (  ) button on the right side of the Load License field to open a file explorer window.



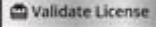
**FIGURE 50**

Locate and select the “. lic” license file from the location on the computer, where it is saved.

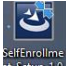
Click on the Open ( **Open** ) button in the file explorer window to load the selected license file.



**FIGURE 51**

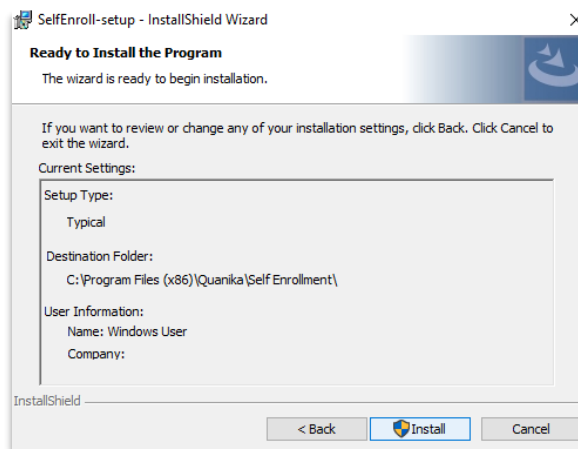
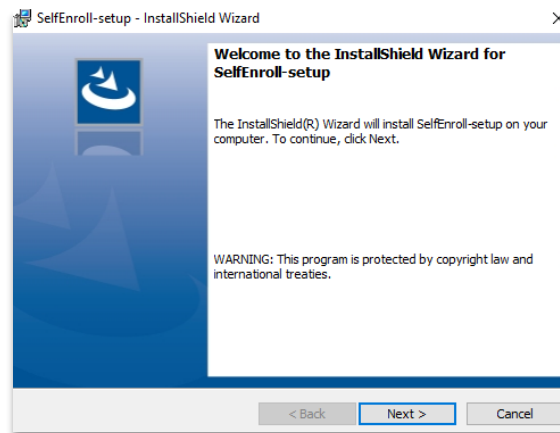
Click on the Validate License () button to enable the license for Quanika application.


## Self-Enrollment

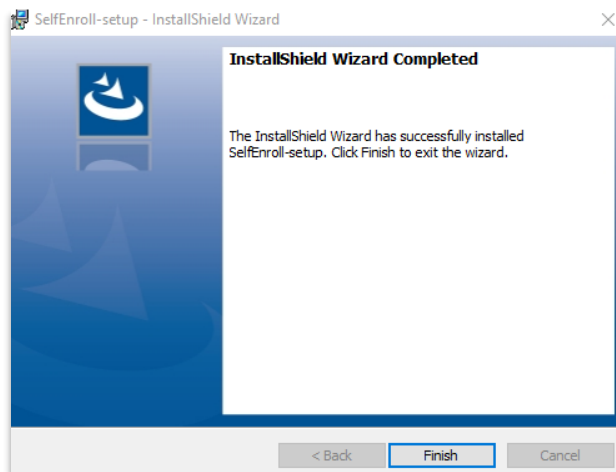
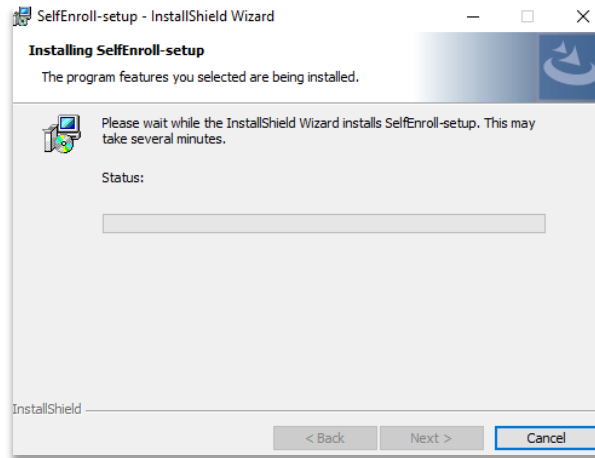
Download the setup from the link provided. After downloading the setup click on  to initiate the installation

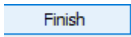

## Installation

Click on Next to continue



Click on  to start the installation.



Click on  to complete the installation. After installation is completed an icon  will appear on desktop. Click on the icon to run the application.

### Preset up - Settings

On running the application for the first time this window will appear for configurations.

### Settings

#### Quanika Settings

Server:

Database:

UserName:


Password:


#### ActiveDirectory Settings

Server:

UserName:

Password:

 Save

 Cancel

## Settings

### Server

Enter Database Server address / Instance Name or IP address of the database server.

### Database

Enter Database Name for database used in Quanika Application. By Default, its QuanikaDB

### Username & Password

Enter Username and Password for database used in Quanika Application.

## Active Directory Settings

### Server

Enter Server Address for Active directory server.

### Username & Password

Enter Username and Password for active directory.



Quanika

Click on Save. In case the credentials are valid it will proceed to login screen and installation / setup is completed

## Contact Information

If you have any queries regarding the installation process, send an email to our technical support at [support@quanika.com](mailto:support@quanika.com)



+44(0) 8450531716



Quanika UK Ltd, 16 Lower Windsor  
Avenue, Belfast, BT9 7DW, UK



[www.quanika.com](http://www.quanika.com)